



MSP in Europe: WWF experiences so far...

2nd Baltic MSP Forum, Riga, 23 November 2016



Gather Spatially
Organized Data
Ocean Ecosystem
and Human I



WHAT IS 'GOOD' MSP?

- Cables in use
- Cables in disuse
- Pipelines
- electricity cable
- 3 nautical mile
- 6 nautical mile
- 12 nautical mile

GAUTRE



presentation
period on draft
plan

Plan policy
develop





Some key questions:

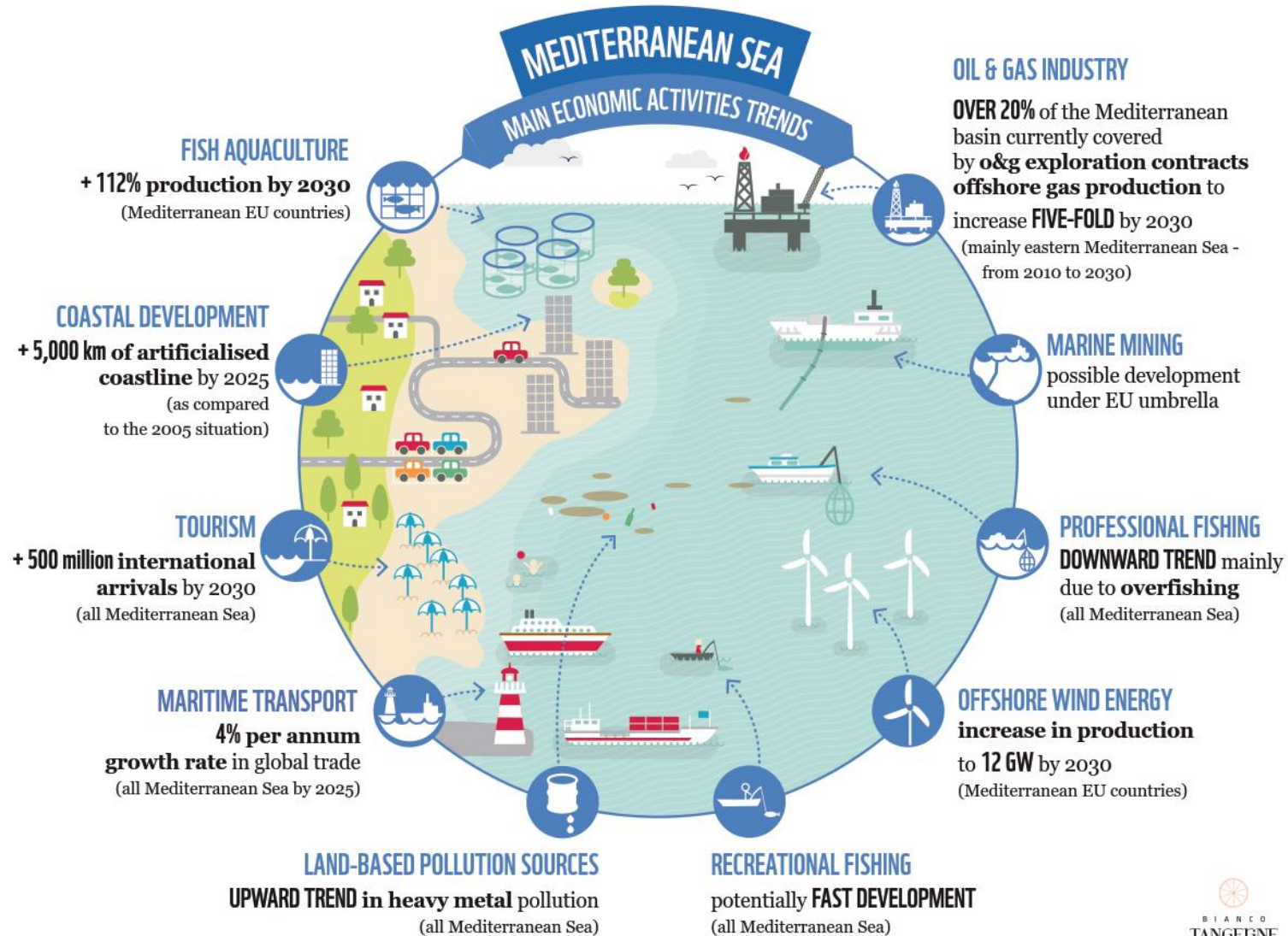


Is MSP:

1. Forward thinking?
2. Supported by stakeholders?
3. Ecosystem-based?



1. Forward thinking?





<http://www.medtrends.org>

© WWF Disclaimer: The depiction of hydrocarbons research areas does not necessarily denote their legality nor the legality of claims of sovereignty, sovereign rights or jurisdiction over those areas. Contracts can change rapidly and the maps depict the situation as per the date.

0 200 500
km

MEDITERRANEAN
EU COUNTRY

DENSITY OF VESSELS TRACKS

TOTAL OF DIFFERENT VESSELS INVOLVED: 38 897

Interpolation / Log scaling / Year 2014

HIGH LOW

MAX = 166 966* MEDIAN = 418* MIN = 1*

*In 1 pixel of 1x1 km
Source: AIS density maps by **navama** technology for nature

OIL AND GAS CONTRACTS

OPEN AREA DEVELOPMENT AREA
BIDBLOCK AREA PRODUCTION AREA
EXPLORATION AREA RELINQUISHED AREA

Sources: DrillingInfo (april 2015) **drillinginfo**
National sources collected by WWF (2015)

WIND FARMS PROJECTS

CONCEPT/EARLY PLANNING
CONSENT APPLICATION SUBMITTED
CONSENT AUTHORISED
PARTIAL GENERATION/UNDER CONSTRUCTION

Source: Offshore4C (2014)

EXPLOITATION OF LIVING RESSOURCES

AQUACULTURE FARM LOCATION
POTENTIAL EU RECREATIONAL FISHING ZONE
POTENTIAL PROFESSIONAL FISHING ZONE

Sources: WWF (2015) JRC-ISPRA (2012),
national sources collected by WWF
Note: Data available only for EU countries

Professional fishing is the sector most affected by the growing development of the maritime economy:

- Fishing zones will be reduced in particular along coastal areas due to the increasing development of coastal activities;
- Pressures exerted by other sectors on marine ecosystems (e.g. additional fish catch from recreational fisheries, some land-based pollution types, underwater noise generated by ships and by oil and gas activities) are growing and may impact fish stocks directly or indirectly.

Figure 2. Potential spatial interactions between sectors

01

Business as usual

02

Nature at work

03

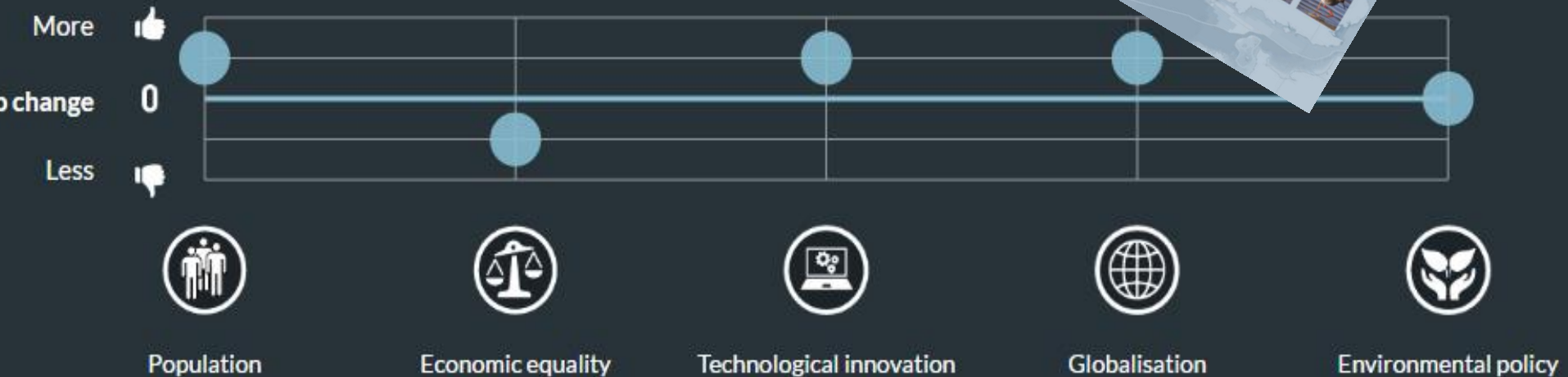
Local Stewards

The marine economy develops as expected.

There are no major changes in attitudes, priorities, technology or

Economic growth remains the priority, with society and industry

to adopt environmental policies that radically change the



Introduction

Wind Energy

Shipping

Ports

Dredging

Tourism and Recreation

Oil and Gas Extraction

Pipelines and Cables

Physical Extraction

Commercial Fishing

Aquaculture

Marine Protected Areas

Industrial Pollution

Agricultural Runoff

└ Nitrogen

└ Phosphorous

All Sectors

Full report 

Both the size and the number of wind parks will grow in the next 20 years. Energy production will increase from today's 436 MW to around 25,000 MW, an increase by more than 6,000 percent.

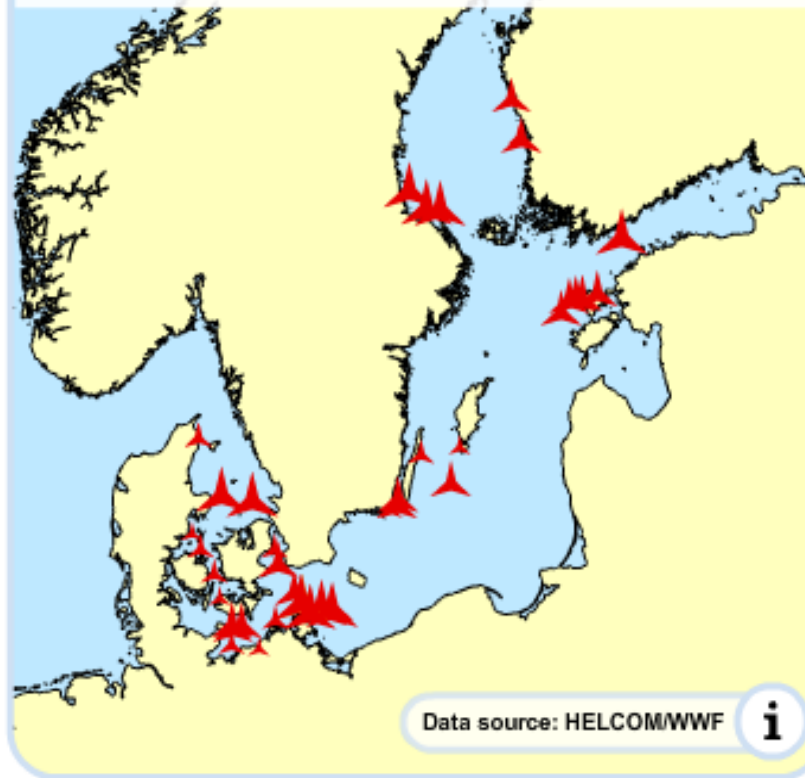


Photo: Sarah Leen / WWF-Canon

Legend

Planned wind farms 2020
Effect MW

-  3 - 10
-  11 - 75
-  76 - 250



http://wwf.panda.org/wwf_news/?194764/Future-trends-in-the-Baltic-Sea

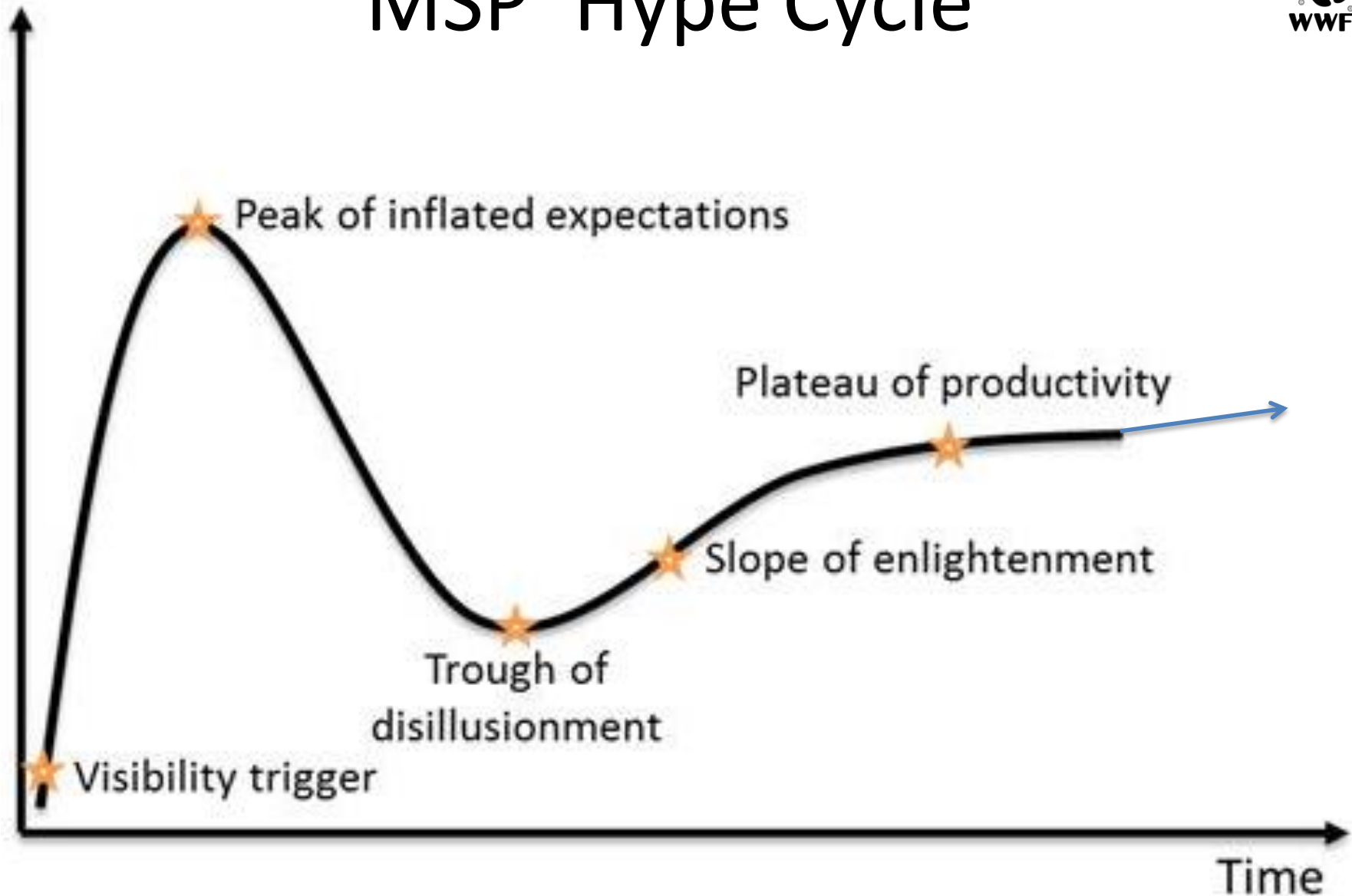
2. Supported by stakeholders?



3. Ecosystem based?



MSP 'Hype Cycle'





Thank you!

Alec Taylor
Marine Governance Programme
Manager, WWF-UK
ataylor@wwf.org.uk