



Croatian physical planning system and strategic approach to MSP

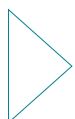
Vesna Marohnić Kuzmanović

Head of Department

Croatian Institute for Spatial Development



Physical Planning Act, 2013 (2014)



Goals and principles of physical planning



integrated approach

science and expertise
spatial sustainability

horizontal integration

vertical integration

free access to information
public+individual interests



Actors in physical planning



efficiency:

Croatian Parliament
Government
local and regional bodies

expertise:

administrative bodies
institutes
experts/professionals



Spatial and physical planning monitoring



Planning requirements



Spatial Development Strategy



Spatial plans



subordinate legislation

Croatian Parliament or Government
regional bodies
local bodies

SPATIAL DEVELOPMENT STRATEGY

The Spatial Development Strategy is fundamental national document for directing spatial development

Sectoral strategies should be in line with the Spatial development strategy

STATE LEVEL SPATIAL PLANS

State plan of spatial development

Spatial plans of areas with special features
Urban development plans of state significance

REGIONAL LEVEL SPATIAL PLANS

County spatial plans

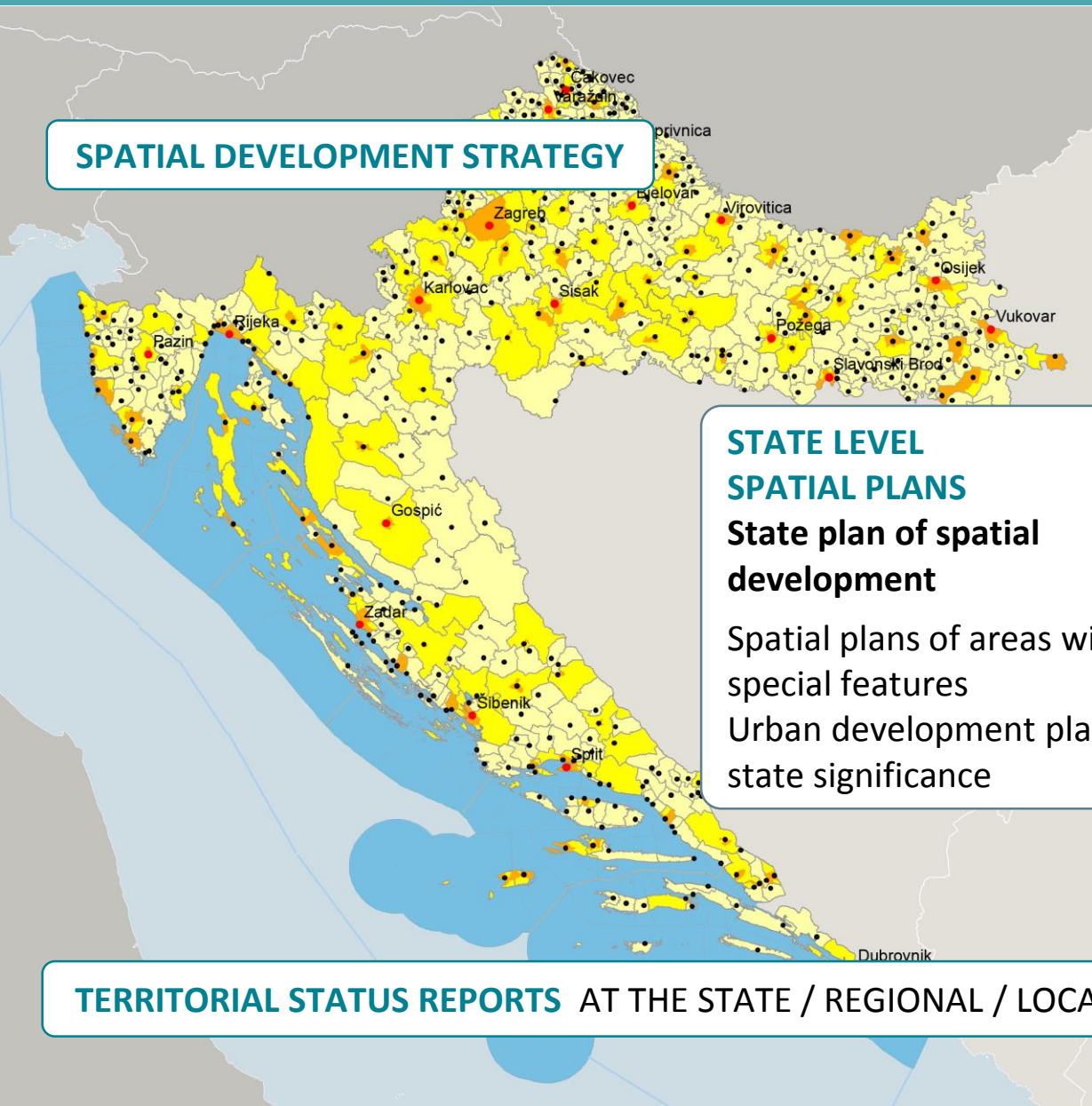
Urban development plans of county significance

LOCAL LEVEL SPATIAL PLANS

Spatial development plans of cities or municipalities
General urban plans
Urban development plans

TERRITORIAL STATUS REPORTS AT THE STATE / REGIONAL / LOCAL LEVELS

PHYSICAL PLANNING INFORMATION SYSTEM

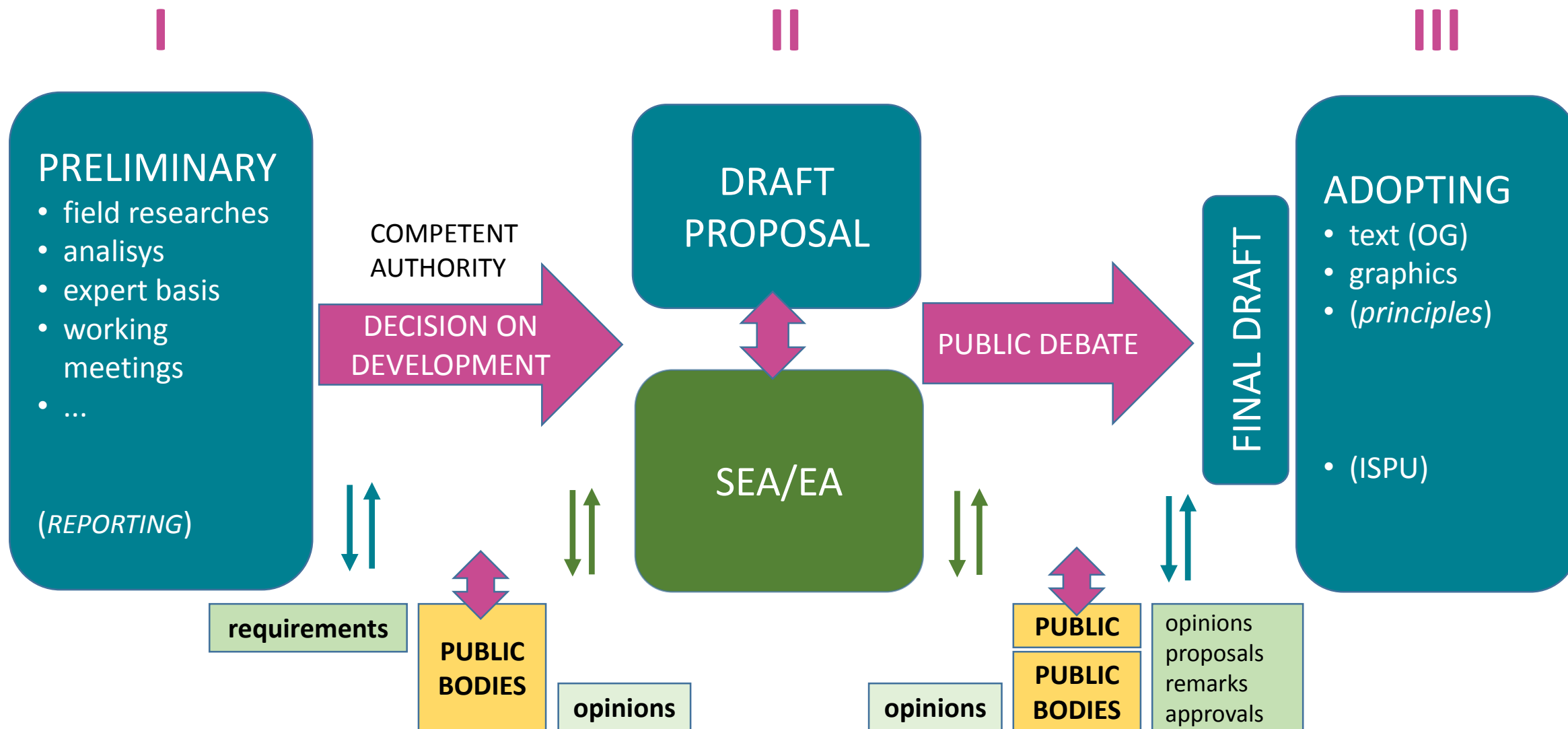


The screenshot shows a web-based GIS application. The main map area displays a geographical region with various land use zones. A red-shaded area is labeled "Registered Users", and a blue-shaded area is labeled "Public Access". A legend on the right side of the map is titled "Legenda" and contains two main sections: "RAZVOJ I UREĐENJE PROSTORA / POVRŠINA NASELJA" and "RAZVOJ I UREĐENJE PROSTORA / POVRŠINA IZVAN NASELJA". The first section lists "NASELJA POVRŠINE VEĆE OD 25 ha" and "NASELJA POVRŠINE MANJE OD 25 ha". The second section lists various land use categories with corresponding symbols: "GOSPODARSKA NAMJENA - PROIZVODNJA" (pretežito industrijska I1, pretežito zanatska I2), "GOSPODARSKA NAMJENA - površine za iskorištavanje mineralnih sirovina geotermalne vode E2, šljunak i pijesak E3, gлина E4", "GOSPODARSKA NAMJENA - POVRŠINE UZGAJALIŠTA (AKVAKULTURA)", "GOSPODARSKA NAMJENA - UGOSTITELJSKO TURISTIČKA NAMJENA" (hotel T1, turistička naselja I2), and "POLJOPRIVREDNO TLO ISKLJUČIVO OSNOVNE NAMJENE - OSOBITO VRIJEDNO OBRADIVO TLO". Below the legend is a table titled "Odabrani slojevi" (Selected layers) with columns for layer names and checkboxes. The layers listed are: "Granice županija", "Namjena prostora (PPZP Zagrebačka županija - neverificiran)", "Namjena prostora (PPZP Krapinsko-zagorska županija - neverificiran)", "Namjena prostora (PPZP Karlovačka županija - neverificiran)", "Namjena prostora (PPZP Bjelovarsko-Bilogorska županija - neverificiran)", and "Namjena prostora (PPZP Grad Zagreb - neverificiran)". On the right side of the interface, there is a vertical menu with icons and labels: "ePlanovi", "eDozvola", "eInspekcija", "eArhiv", "eKatalog", "eNekretnine", "DGU podloge", "NIPP", "NIPP", and "Poveznice". At the bottom of the map, there is a scale bar showing "1 : 250 000" and a coordinate system "HTRS" with coordinates "Koordinate: E = 474219, N = 5085687".

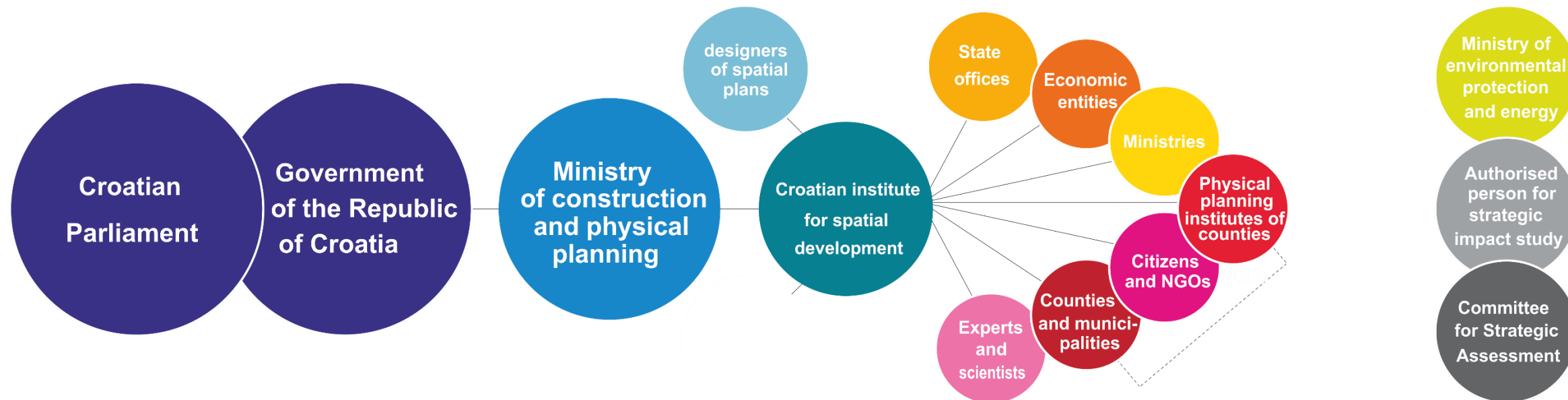
Registered Users

Public Access

external services (via NSDI)



Stakeholders in spatial plans development procedure



Public consultations

Ministry of Construction and Physical Planning

state body competent for spatial and physical planning

Croatian Institute for Spatial Development

physical planning activities at the state level

(including implementing international obligations of the Republic of Croatia)

Physical planning institutes of the counties

physical planning activities at the county level/municipal spatial plans

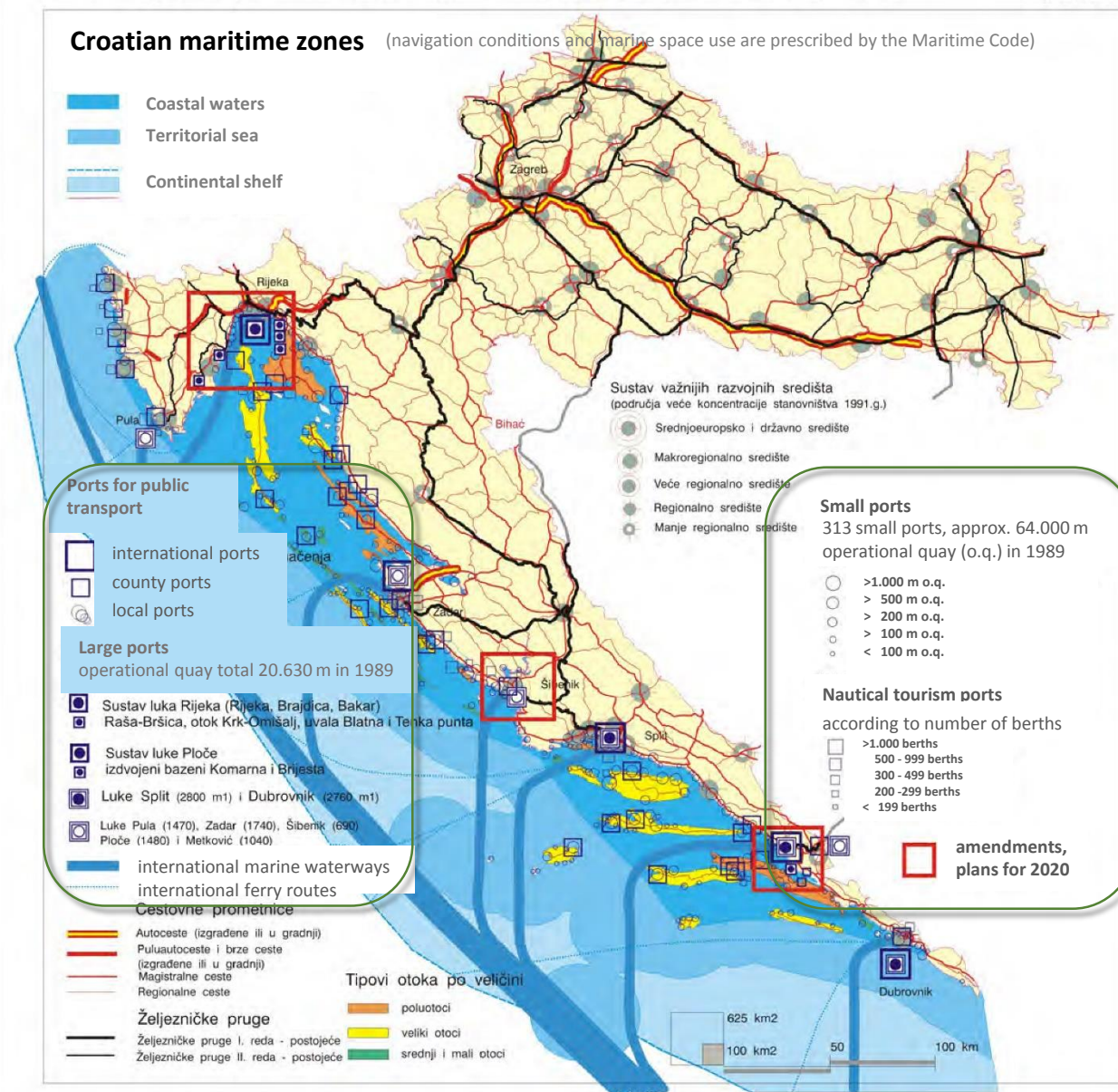


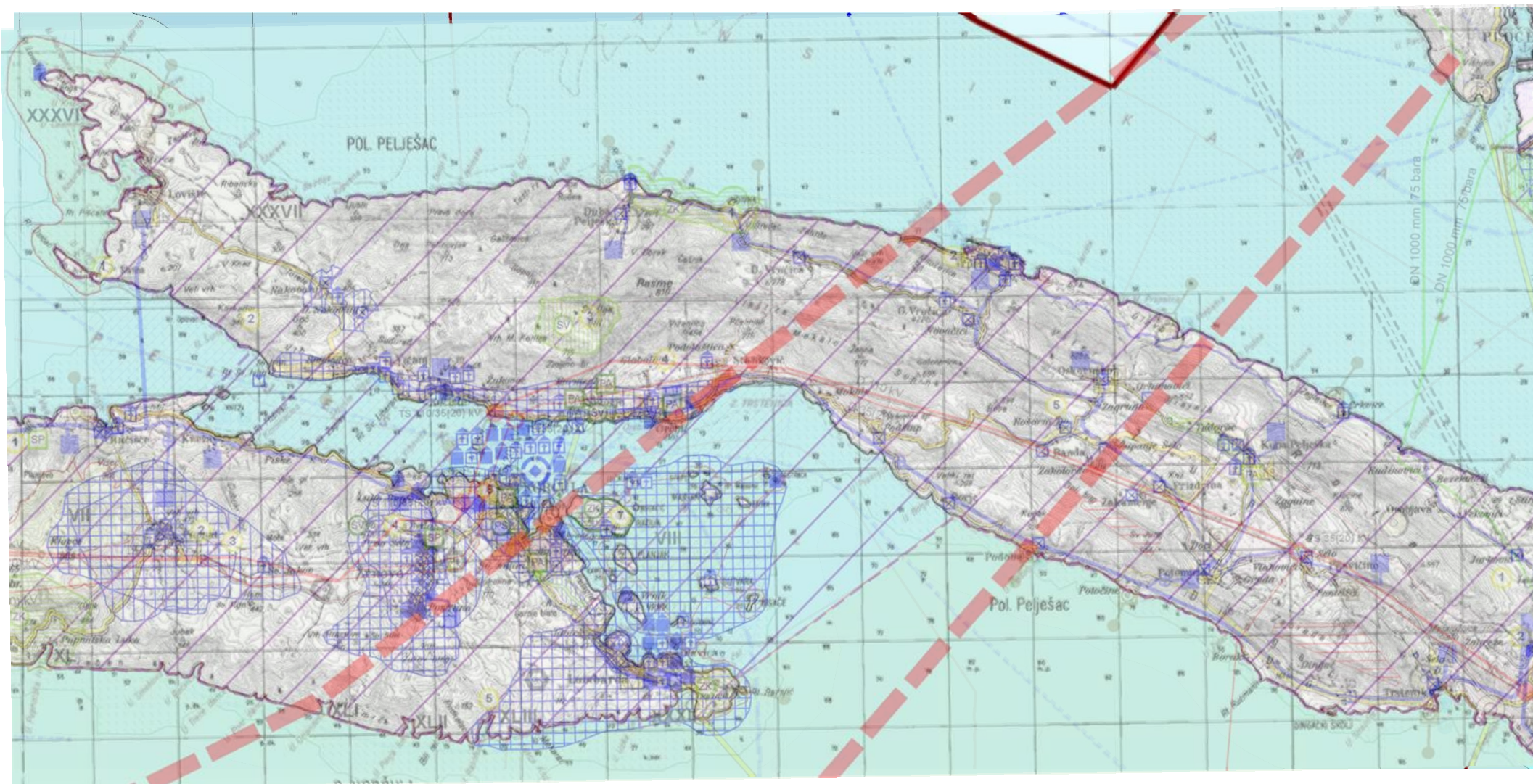
MSP in use

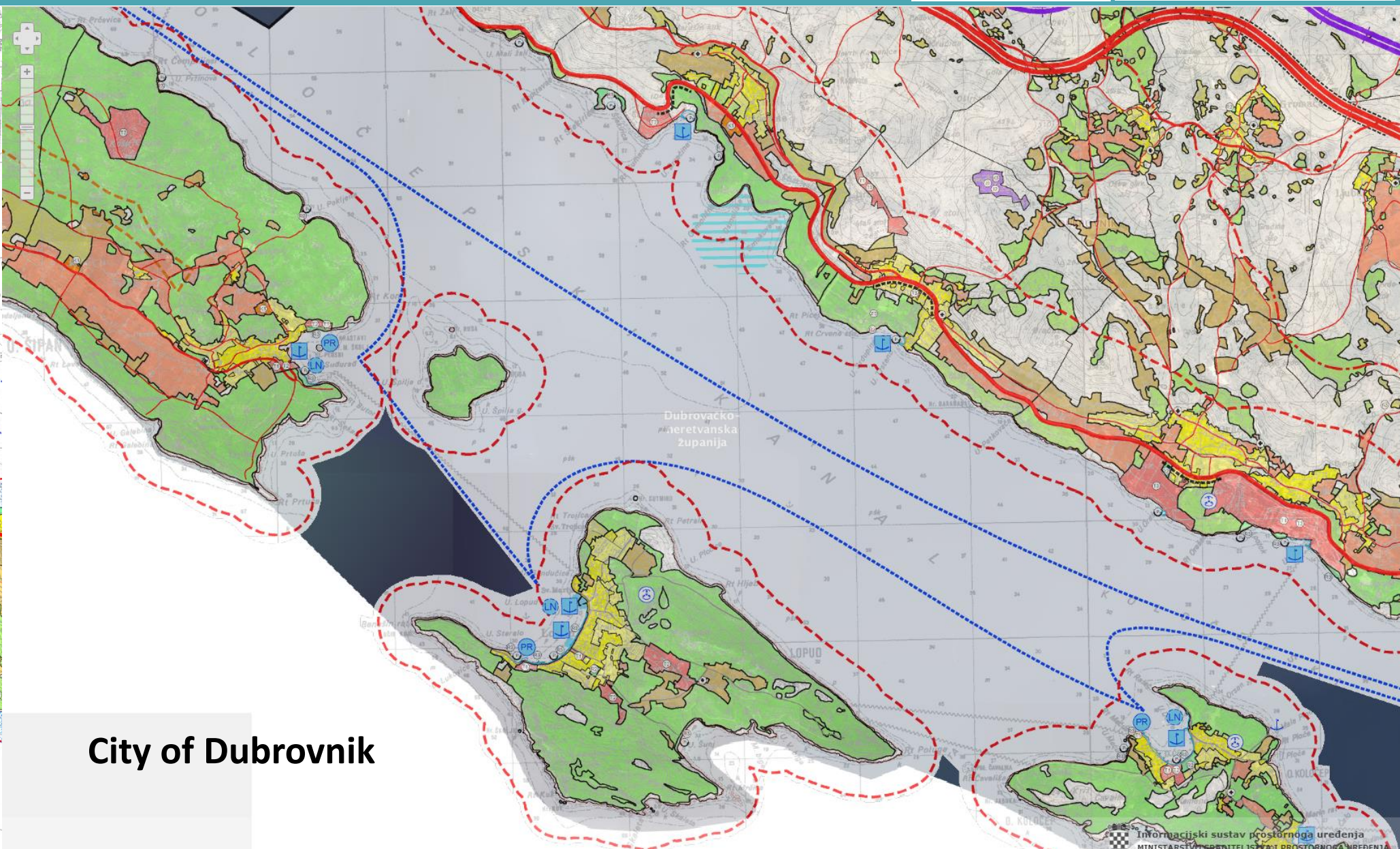
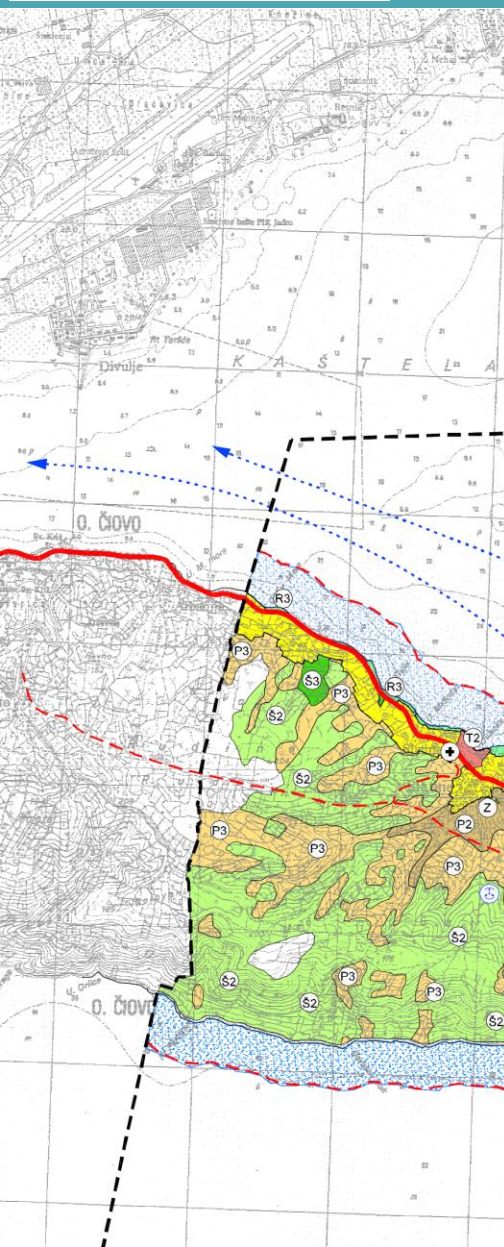
MSP at state level

Physical Planning Strategy
(1997, amendments 2013)

Physical Planning Program
(1999, amendments 2013)







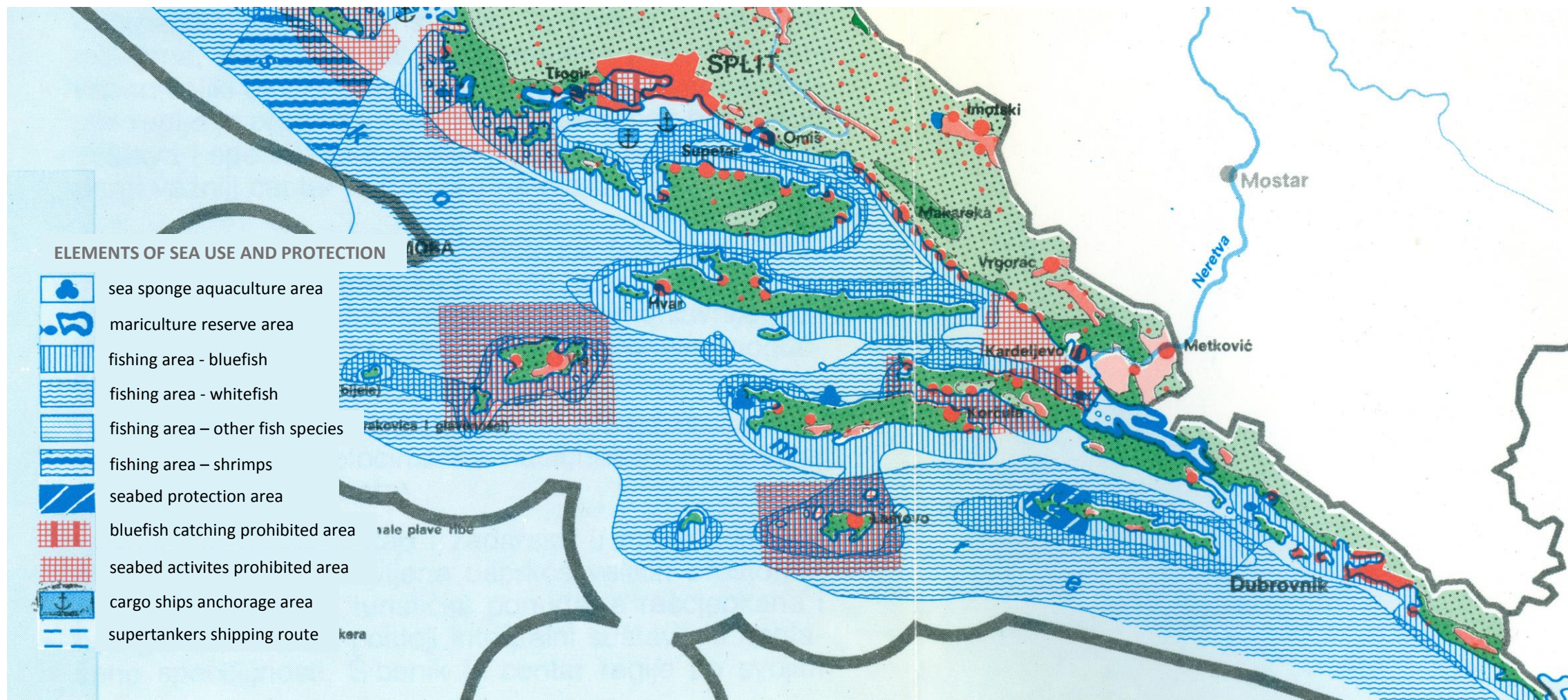
City of Dubrovnik



MSP heritage

MARITIME AREAS - STATE SPATIAL PLAN 1989, MAP: Space Purpose and Use Planning

100km² mjerilo 1:1700 000
0 10 20 30 40 50 km



State spatial plan 1989 - Maritime areas

SEA AND RIVER PORTS

- main port - domestic and international
- main port - domestic and international
- important port and ferry dock
- larger maritime anchorage
- important river port

MARITIME NAVIGATION

- international ferry route
- interregional and important regional ferry route
- maritime shipping route for large ships and tankers

WATERWAYS AND CANALS

- international waterway
- interstate waterway
- waterway

Protection of Natural Values

- area on the World Heritage List
- national park
- national park – proposal for registration
- nature park
- nature park – proposal for registration
- significant nature reserves
- significant nature reserves - proposal for registration

other significant nature reserves

- geomorphological - landscape
- geomorphological
- hydrological
- landscape
- vegetational
- botanical
- zoological
- natural values and recreation areas
- protected seabed areas



MAP: Infrastructure – Transport

MAP: Environment Protection – Natural and Building Values



MSP further actions

Draft proposal - adjustment with EU Directive on framework for maritime spatial planning (FMSP)

Maritime spatial planning should be the spatial planning process in which the subjects of physical planning analyze and organize human activities at sea in order to achieve ecological, economic and social objectives

MSP at three levels:

STATE LEVEL SPATIAL PLANS

State plan of spatial development
Spatial Plan of EFPZ/EEZ
Spatial Plan of Continental Shelf

REGIONAL LEVEL SPATIAL PLANS

County spatial plan

-for projects and surfaces of regional significance according to special regulations

LOCAL LEVEL SPATIAL PLANS

Spatial development plan of a city or municipality

-within the restricted area

- Adriatic Croatia (NUTS 2)
- Continental Croatia (NUTS 2)
- Protected coastal area - territory of coastal cities/municipalities
- Restricted area – 1 km from coastline, 300 m sea
- Continental shelf border

Local authorities involved

133 cities/municipalities in **7** counties

73 coastal cities/municipalities

50 island and peninsular cities/municipalities

7 coastal-island cities/municipalities

2 cities/municipalities within 1 km from coastline

approx. 25 % of all municipalities



Heritage



Tourism



Transport



Adequate responses:

Proactive planning as a response to use conflicts and management needs

Integrated vs. sectoral approach

Decision support tools

Horizontal cooperation mechanisms

Nature/Landscape



Energy



Exploitation



Aquaculture



Fishery



Islands

1,246 islands, islets and reefs

- traffic isolation, poor interconnectivity
- lack of social infrastructure, water supply...
- depopulation vs. seasonal pressures
- 7 counties, 51 island city/municipality
- traditional small scale fishery



Pressures on coastal areas

Tourism

- excessive urbanisation
- illegal construction
- extreme seasonal demands

Legal issues

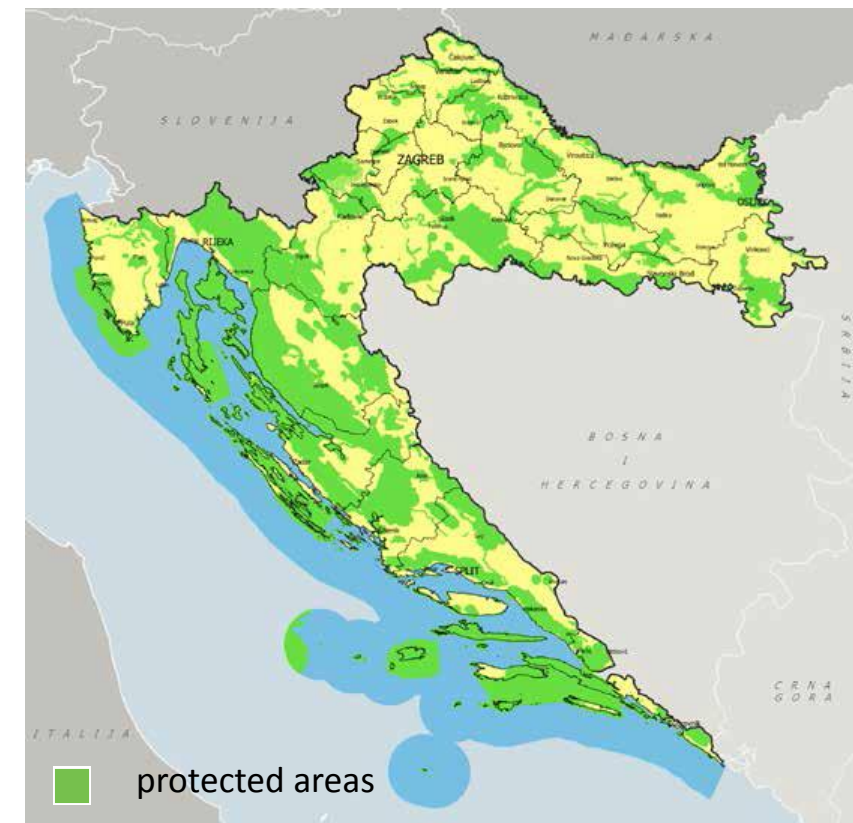
- maritime borders issues
- maritime property boundaries



Protected areas

Protected nature

- development conditioned by protection requirements





Project on MSP

Supporting maritime spatial **P**lanning in the **E**astern **M**editerranean



Member states – IT, GR, HR, SL



Coordinator – CORILA (IT)



Partners

Ministry of Infrastructure and Transport (IT)

Ministry of Environment, Land and Sea (IT)

Croatian Institute for Spatial Development (HR)

Regionalni Razvojni Center Koper (SL)

UNEP/MAP (GR)

Hellenic Ministry of Environment and Energy (GR)

National Technical University of Athens (GR)

University of Thessaly (GR)

National and Kapodistriako University of Athens (GR)



Thank you

vesna.marohnickuzmanovic@mgipu.hr