



W 2/1 Catching fish and
fisheries in planning
(Baltic SCOPE)

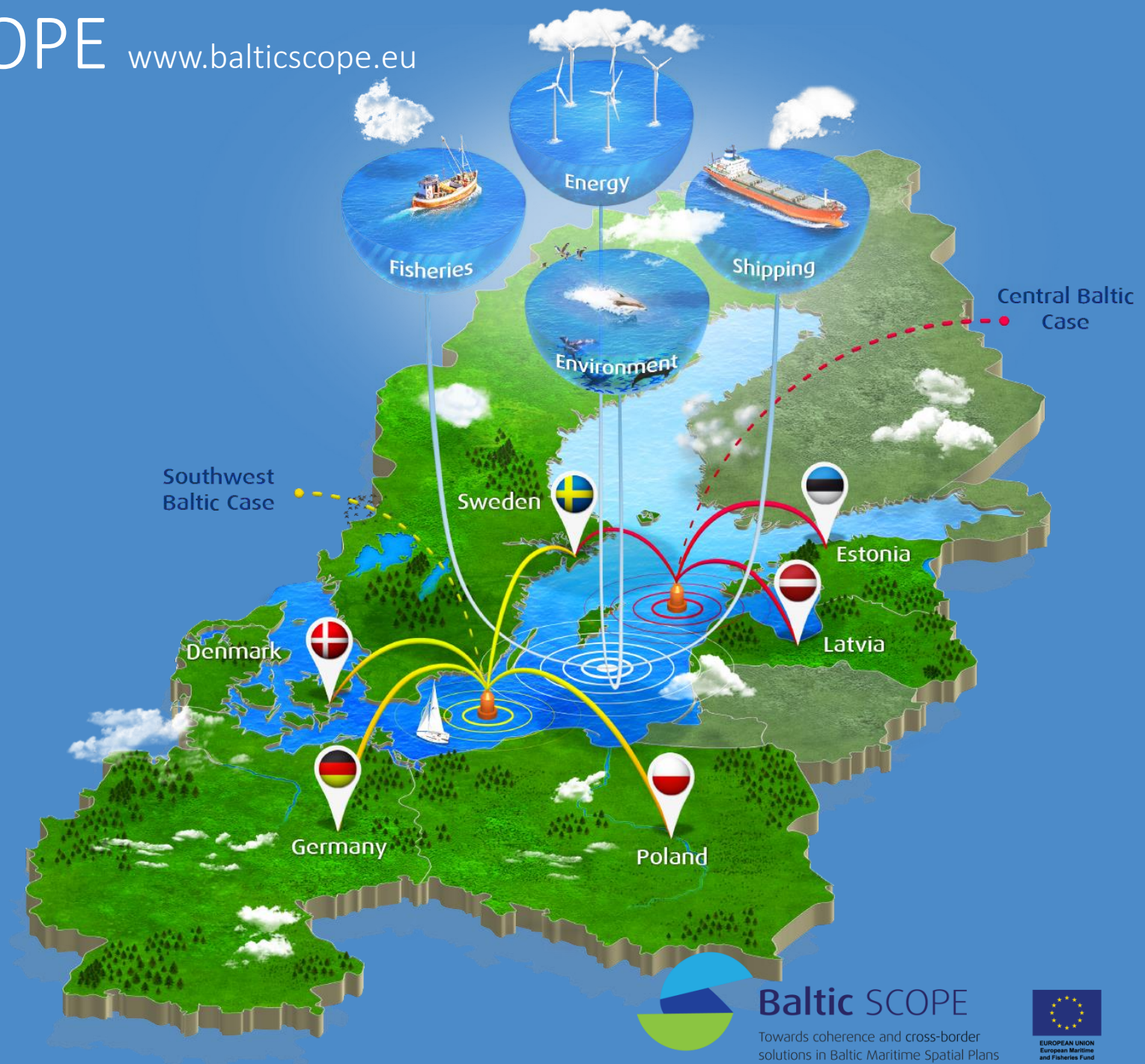
Latvian, Estonian and Swedish approach to catch fish and fishery in national MSP

Didzis Ustups

Roberts Aps

Terje Selnes

Baltic SCOPE project



Baltic SCOPE

Towards coherence and cross-border
solutions in Baltic Maritime Spatial Plans



EUROPEAN UNION
European Maritime
and Fisheries Fund

Status of national MSP

Estonia	Latvia	Sweden
<ul style="list-style-type: none">• Pärnu County sea area MSP in finalization phase• Hiiu County sea area MSP in finalization phase	<ul style="list-style-type: none">• Final draft of MSP -> Government (2017)• time perspective of the plan is up to 2030• Latvian EEZ	<ul style="list-style-type: none">• MSP-sketch released 1th December for sector discussions to serve as input to a MSP- draft in winter 2017

Fish and fishery in MSP

HOW

- Commercial fishery data
- Surveys data
- Literature analyses
- National interest areas for fisheries



WHAT

- Commercial fish species
 - Landings
 - Efforts
 - Nursery grounds
 - Spawning grounds
- Species diversity
- Invasive species
- Harbors

Study area - The Central Baltic Sea



Countries

Estonia
Latvia
Sweden

Years

2004 - 2016

Fish species

10 commercial fish species

Type of information

Fishing grounds
Nursery grounds
Spawning grounds
Harbors

Fishery information on national level – logbooks (“normal” and electronic)

Common fish stocks in the Central Baltic Sea 10 (+2)

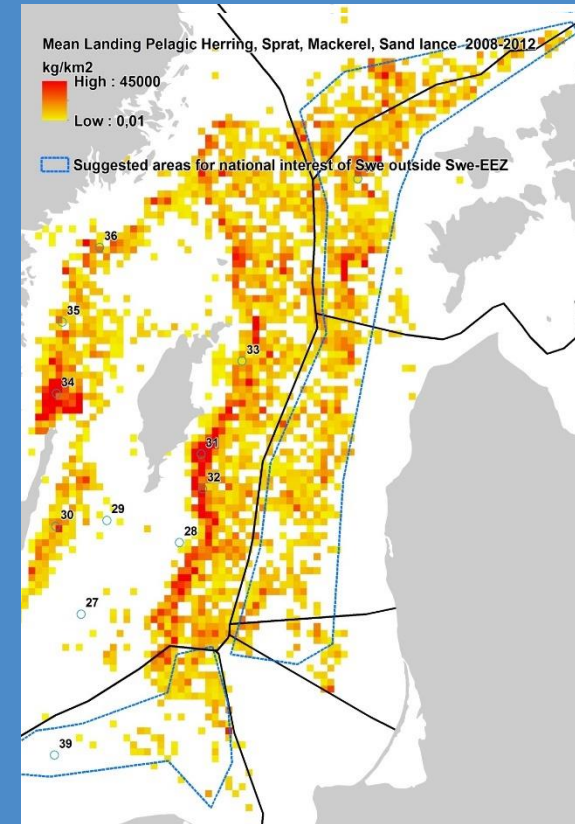
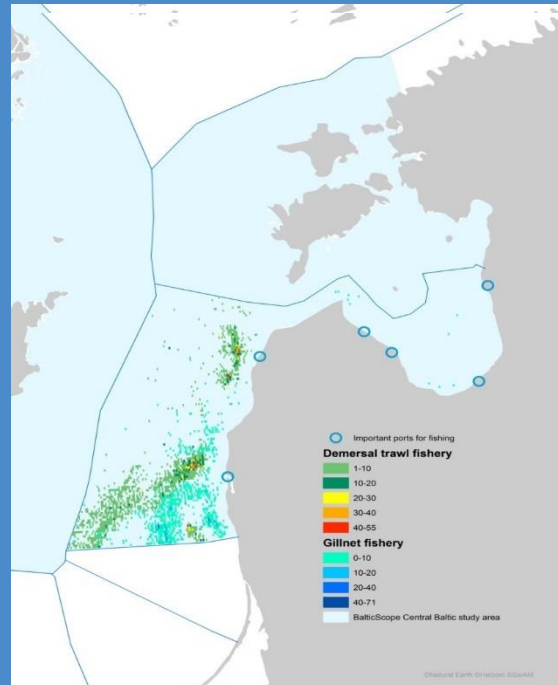
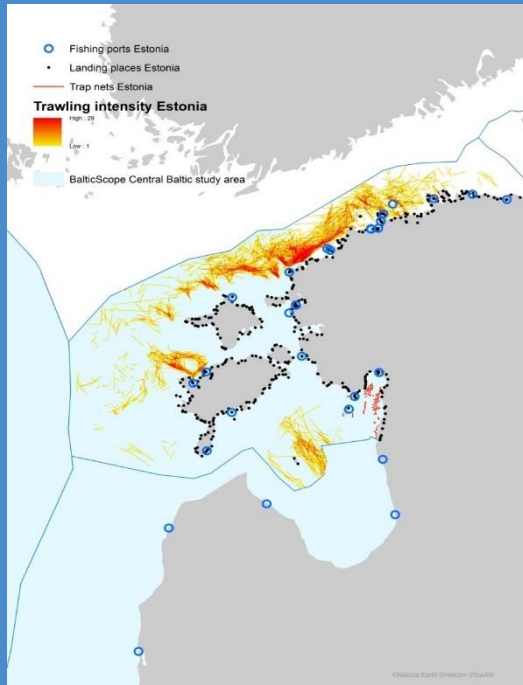
- Eastern Baltic cod (SD25-32), Central Baltic Sea herring (SD25-29 and 32), Gulf of Riga herring (SD 28.1), Sprat (SD 22-32), Flounder SD 26 and 28, Flounder SD 27, 29-32, Turbot (SD 22-32), Plaice (SD 24-32), Salmon (SD 22-31), Sea trout (SD 22-32) as well as (Brill (SD 22-32) and Dab (SD 22-32))

Main differences between the compiled national maps

- Different transboundary information
- Different period of time
- Difference in gear type
- Differences in ports/landing places
- Difference in presented in fish habitats

Transboundary information

Estonia	Latvia	Sweden
Estonian EEZ and the Baltic Sea waters subject to equal access rights under EU CFP	Latvian EEZ	The Basins of Baltic Sea, Bothnia Bay, Kattegat, Skagerak and North Sea



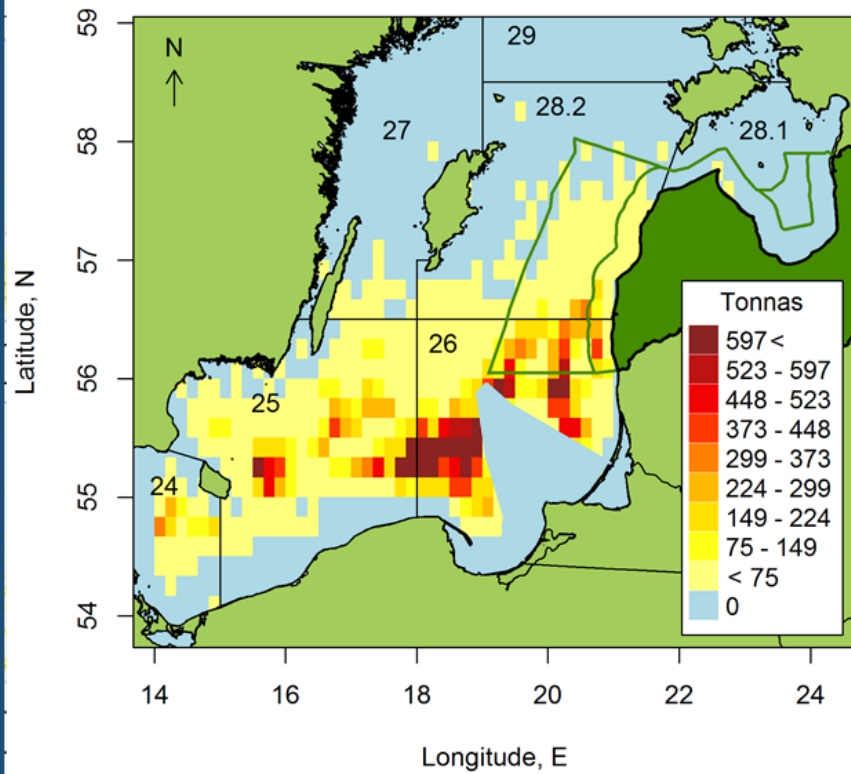
Data availability

[illegible]

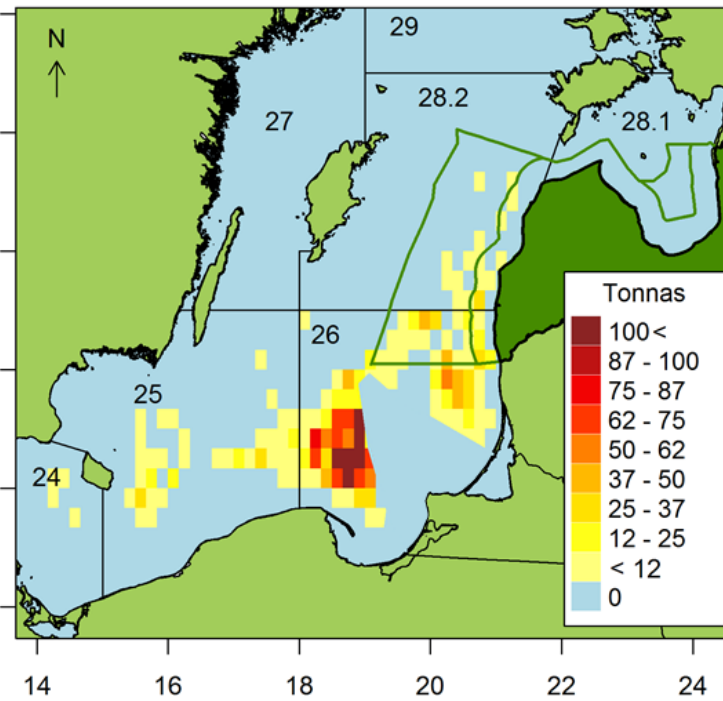
Source of fishery information

	Estonia	Latvia	Sweden
Data type for commercial fishery	EU Mandatory real time Electronic Reporting System data on trawl fishery and the electronic log-books on coastal fishery	Logbooks (it provides longer time series, more detailed information in small scale)	Logbook System used for further calculations of unique trips in relation to registered first price buyer of catches.

Cod landings 2004-2015



Cod landings 2015



BIOR, Putnis et al, 2016

2012

2013



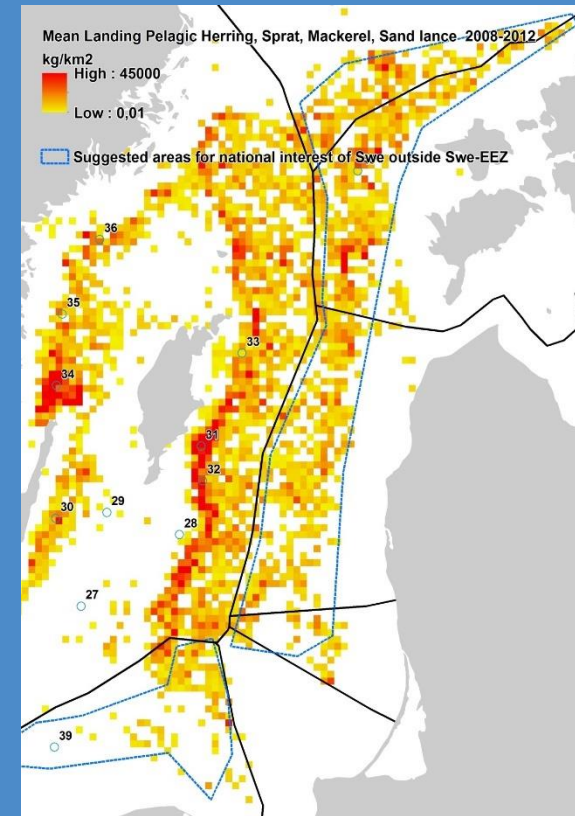
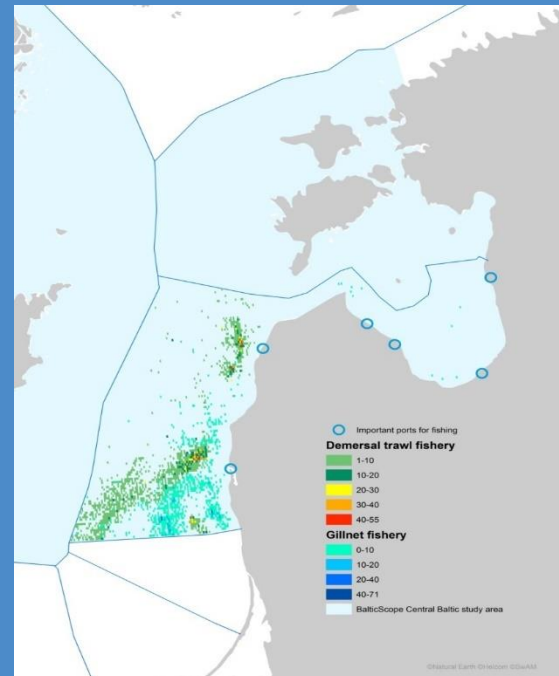
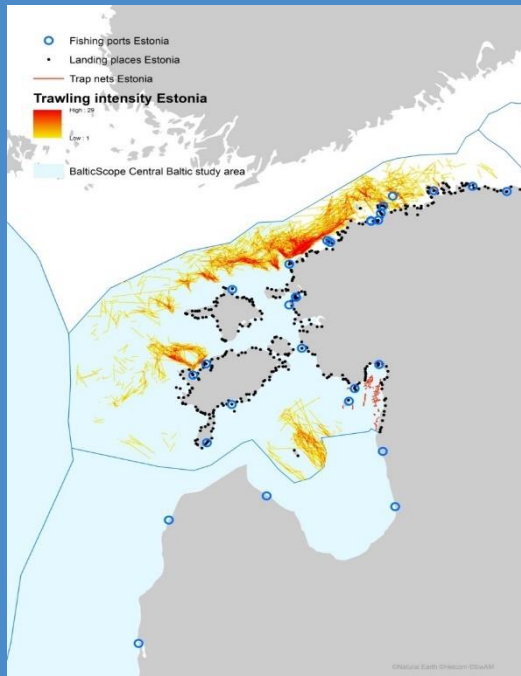
**Only 20% of Latvian
cod landings are from
Latvian EEZ**

Differences in ports/landning places

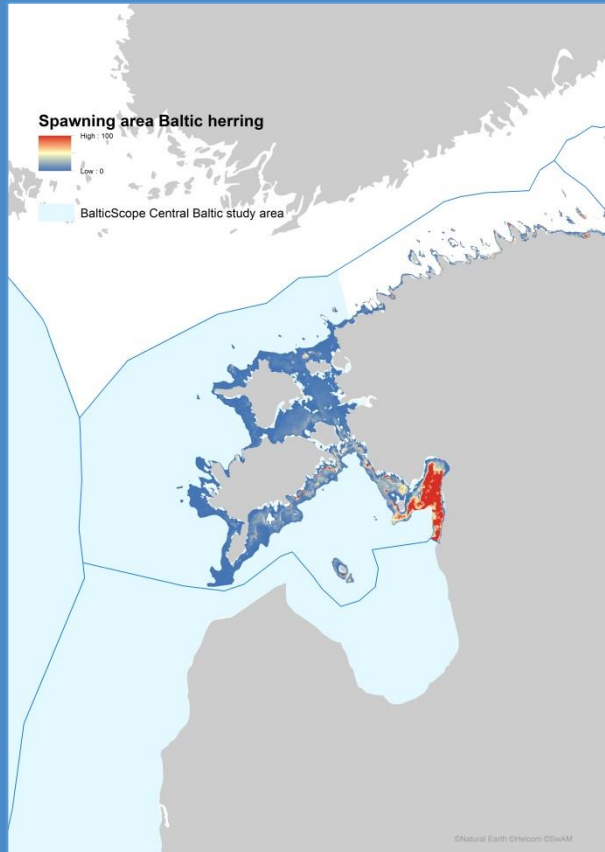
All ports

Important ports for fishing

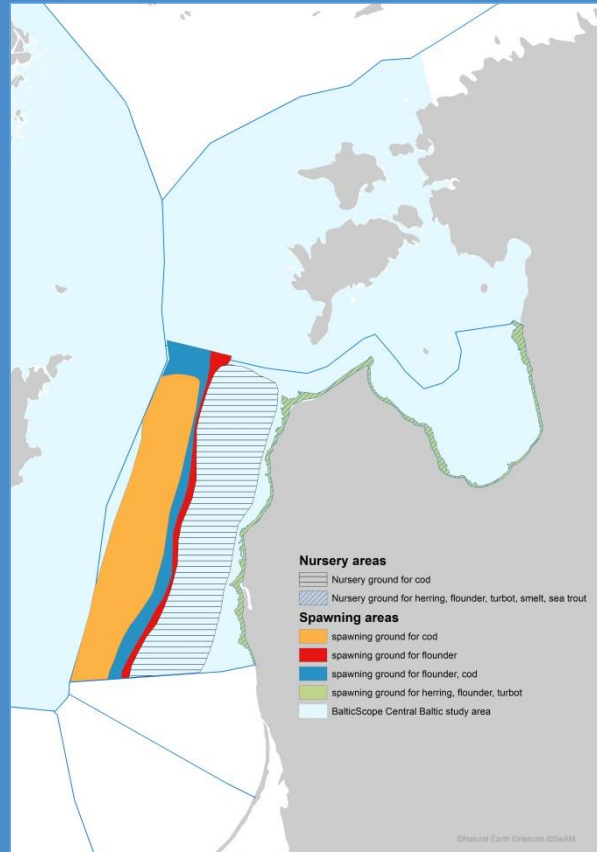
Important ports (in text)



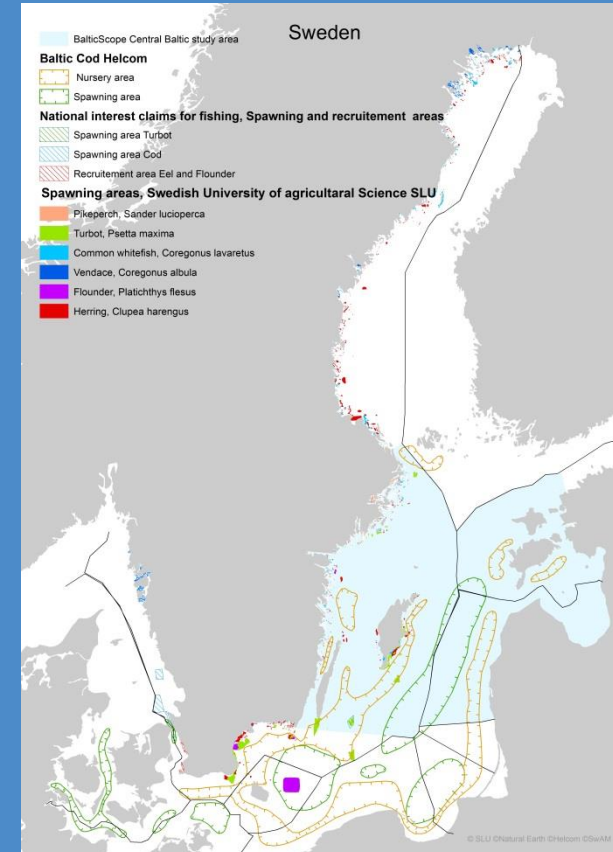
Nurseries and spawning grounds



Herring, coastal zone

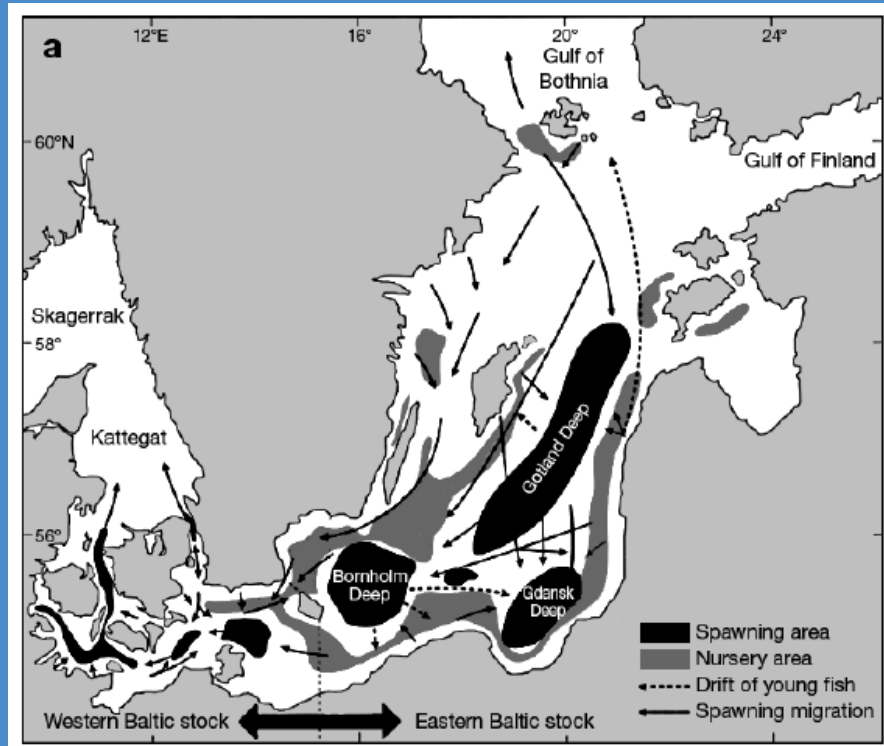


Herring, sprat, cod,
flounder, turbot, coastal
zone



Cod, herring, flounder,
turbot, pikeperch,
vendace, whitefish

Nurseries and spawning grounds



Source: Aro, 1989

- What should we include in the maps?
- Potential spawning grounds or observed ?
- What approach is the best?
 - National level
 - By stocks
 - The same for the Baltic Sea

Next steps...

Estonia	Latvia	Sweden
Estonian trawl fishery outside national EEZ is well covered by Electronic Reporting System (management) and VMS data (used for control purposes)	Latvian fishing grounds outside of national EEZ, compilation of VMS+logbook data	Updated maps on kilograms and economic values in fisheries as well as improved historic spatial data on fisheries and fish habitat.

For the discussion....

- How to present fishery in MSP?
 - Logbooks
 - VMS
 - VMS+logbooks
- How to present habitats in MSP?
 - Observed or potential?