



# Fisheries as integral part of MSP – first steps

**Jochen Lamp**  
WWF-Germany

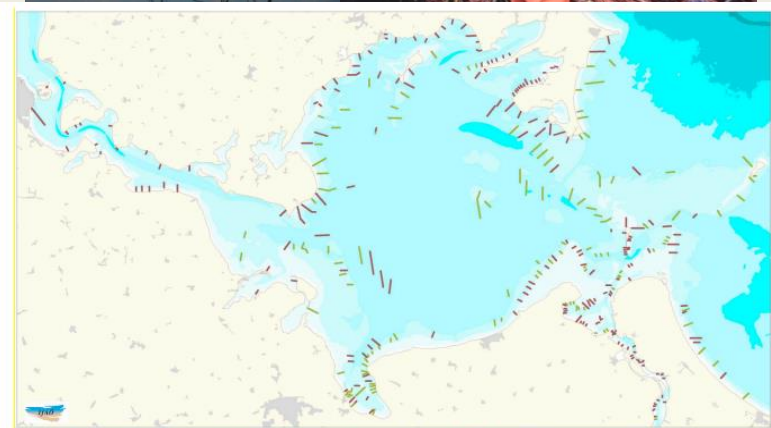
# Towards Fisheries as integral part of MSP

Jochen Lamp  
WWF Germany



# Is fishery spatially relevant?

- **Spatial claim with the longest tradition**  
–comparable with shipping
- **Occupies all sea areas**
- **Strong impact on other sea users and functions**
- **Variety of gear types and specific sea uses** (fixed gear to temporal, surface to bottom)



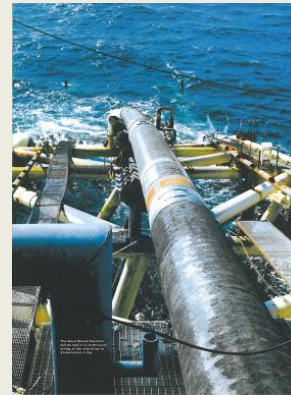
Fish traps in the  
Greifswald Lagoon

Abbildung 36: Standorte von Reusen im Greifswalder Bodden aus Seekarte der Ausgabe 1984 (braun – Jahresreuse, grün – Frühjahrs- und Herbstreuse)

# Does Fishery conflict with other claims for space?

---

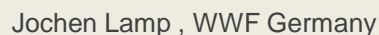
- Shipping/dredging/dumping
- Mineral extraction
- Pipelines/cables
- Nature conservation
- Wind power



- Pipelines bring in hard sediment structures

- Dredging may destroy spawning habitats

- Changes of turbidity





# Active removal of species from the ecosystem

---

- Overfishing
- Bycatch/Discard
- Change in food-chain
- Harbour porpoise-bycatch



# Internal competition

- Between cod and sprat fisheries
- Small scale vs. large scale gear
- Professional vs. leisure fishing
- Fishery vs. Aquaculture
- Nature Conservation MPAs

With other sea uses:

- Wind energy
- Etc.



## But why is fisheries not part of MSP yet?

---

- The traditional paradigm “freedom of the sea”
- No spatial ownership /tragedy of the commons
- EU Common Fisheries Policy deals with the issue exclusively
- Reluctance to change in authorities and with fishermen

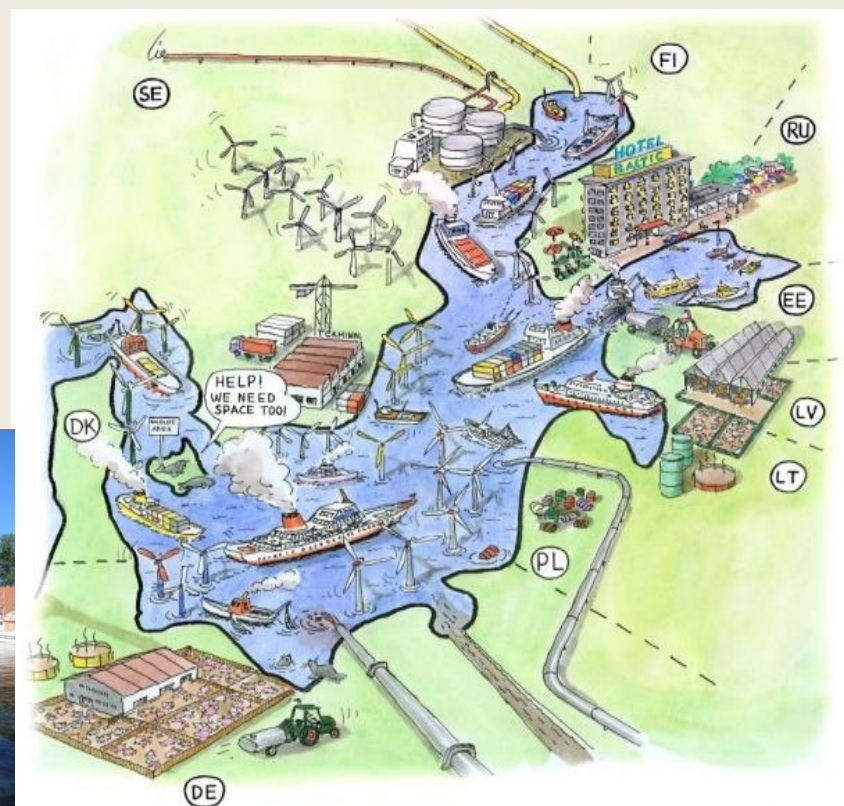




# Is there no need for a change?

- Exploding sea uses
- EU demands from MSFD
- Securing fish habitats
- EU Natura 2000 directives
- Shrinking economic share
- Fisheries role shifts from food
- supply to tradition

**Wir wollen auch leben !**  
 1991 - 1800 Fischer  
 2009 - 380 Fischer



# Things have started to change

---

- **EU MSP directive (include fisheries and aquaculture)**
- **Common fisheries reform**
- **EU Marine Strategy Framework Directive**
- **EU and Helcom projects and workshops**
- **Planning schemes and MSP plans in some countries**



# Tools are available – stocktaking

- Maps and data (VMS, AIS, Habitat maps)
- Concept of essential fish habitats
- fishermen's own data

Areas with special functions for fish

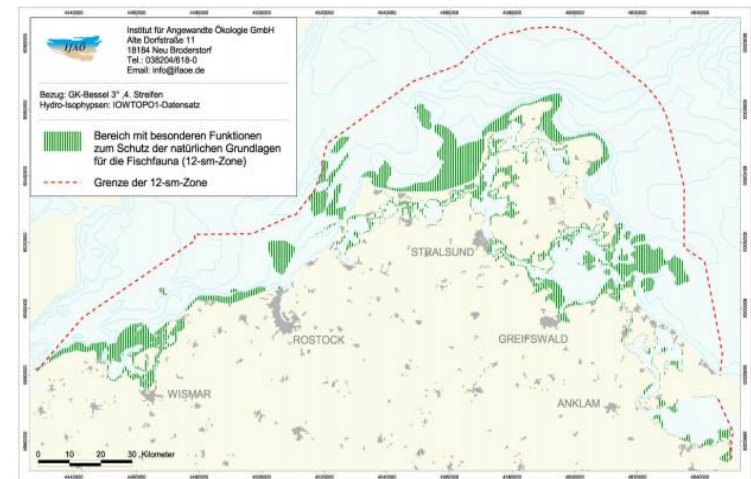
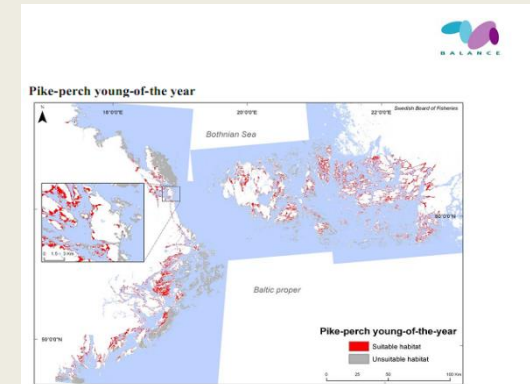
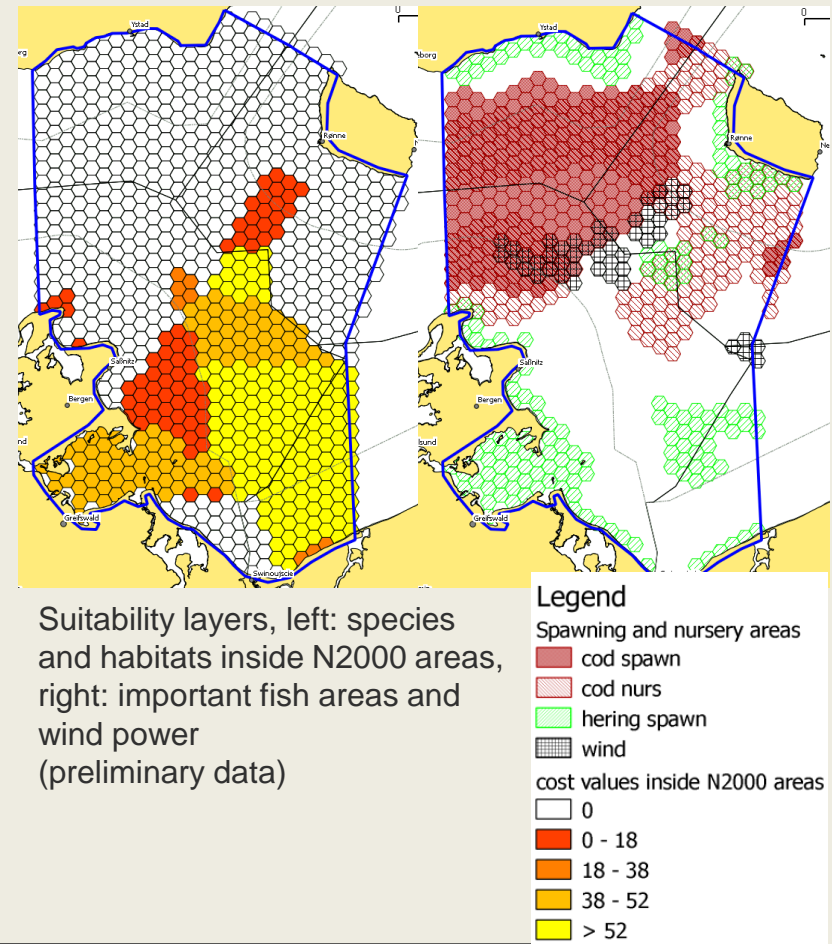


Abbildung 76: Bereiche mit besonderen Funktionen zur Sicherung der natürlichen Grundlagen der Fischfauna

# Tools for planning

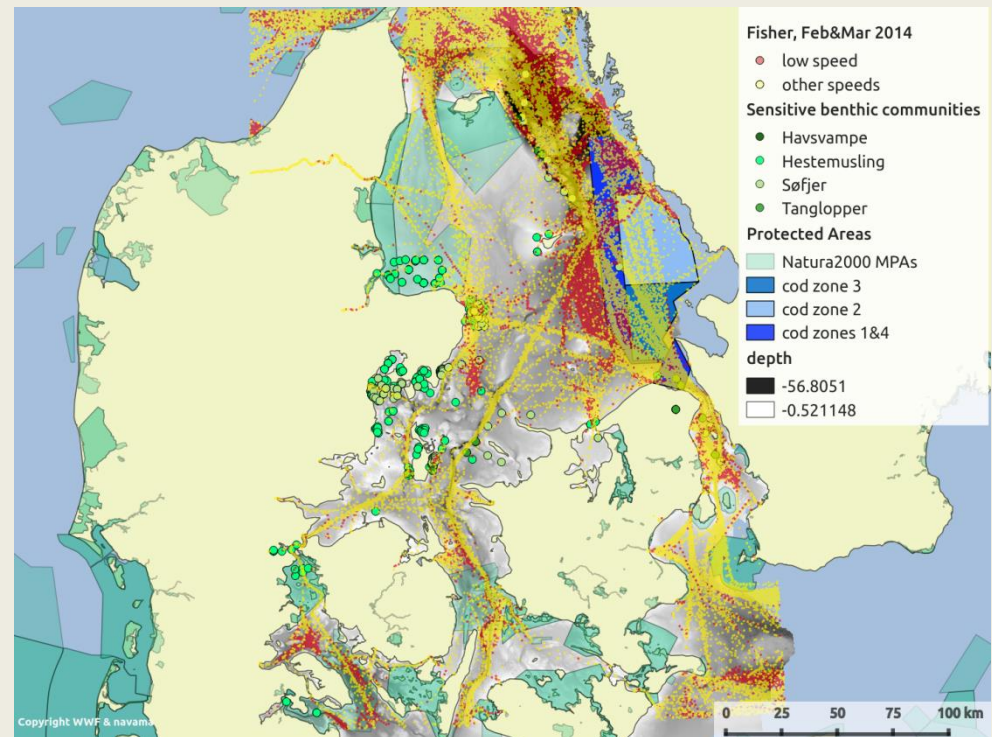
- Existent fisheries management tools (spawning areas, temporal closures, gear type closures)
- Decision support tools
- Experiences to deal with fisheries vs. Nature conservation, or vs. Offshore wind





# AIS/VMS Analysis

- Speed
- Pattern
- Bathymetry
- Wind&Wave
- Ports & EEZ
- VMEs, MPAs, LMEs
- Trade context
- Transshipment
- AIS on/off statistics



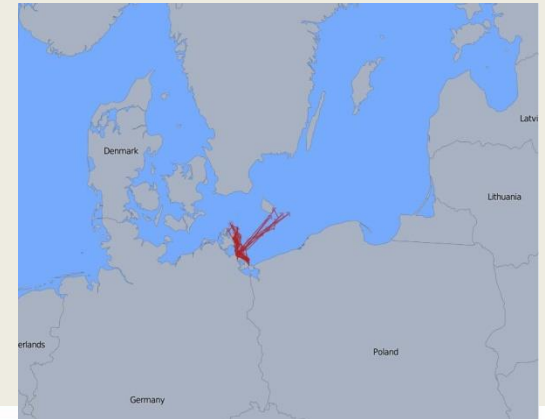


# Tools for monitoring /transparency

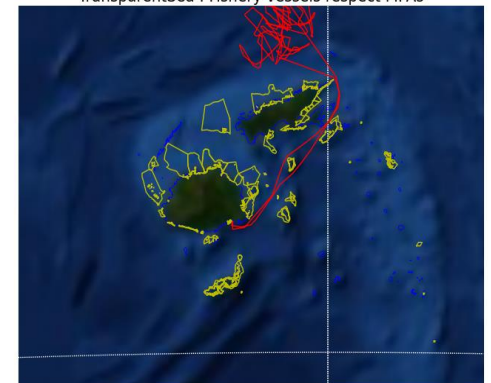
Globally tested AIS  
equipment for small  
vessels



**navama**  
technology for nature



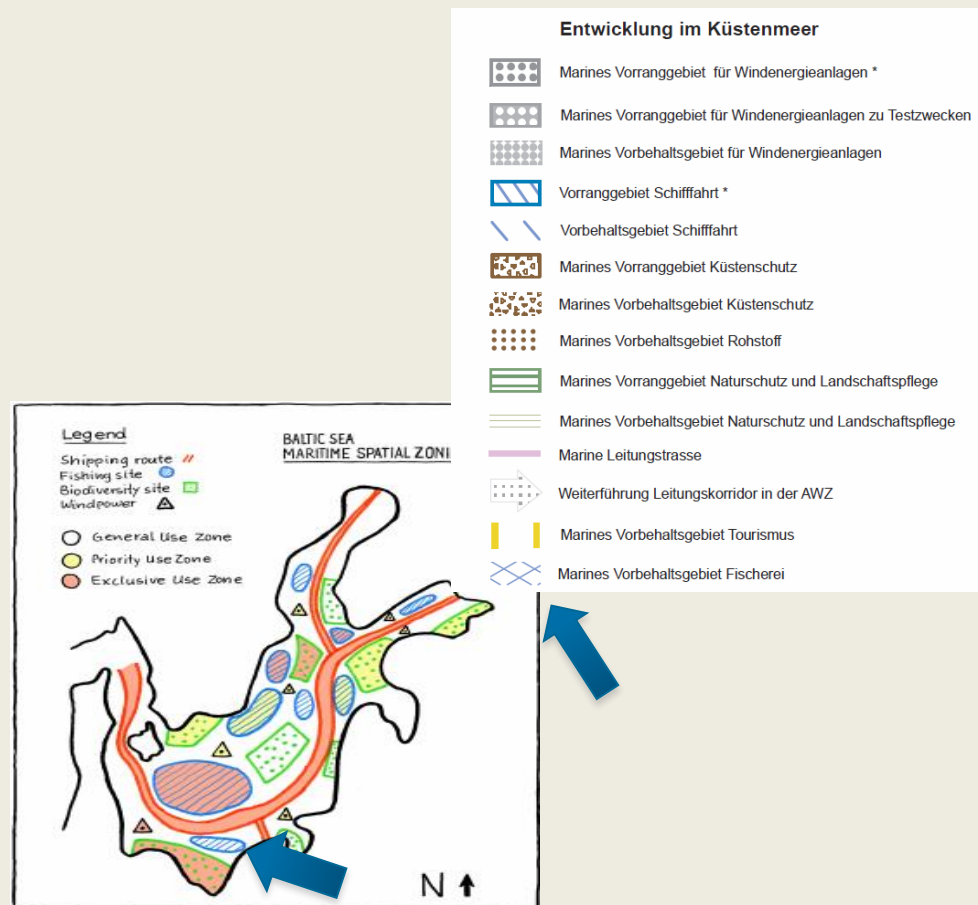
TransparentSea : Fishery vessels respect MPAs



Copyright WWF & navama

# How translate into practice : MSP Plans

- Putting fisheries claims on the maps : priority areas and restriction areas
- Define criteria
- Define management options for spatial fishing regulations  
(Gear type, temporal, size, professional vs. Leisure,...)



# Translate into management measure

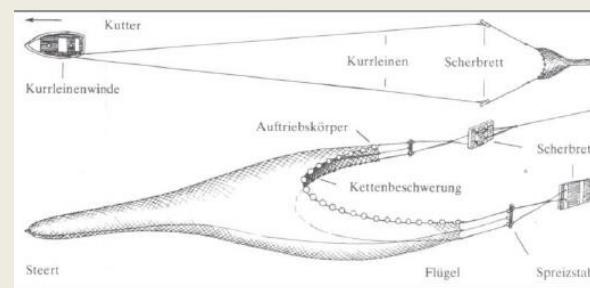
## Designation within the sector: Fisheries

- Gear type
- Small scale/large scale
- Temporal
- Professional vs leisure

## Designations to protect living resource

- spawning habitats
- Larvae drifting corridors
- Wintering areas etc.

**Legal tools already exist in the fisheries management toolbox.**



# Example Mecklenburg-Vorpommern, GER

## 2nd planning cycle MSP plan

Approved 2016

Fisheries included as reservation zone

**however:** the original essential recruitment habitats (**protection of fish**)

was changed to fisheries areas (**exploitation of fish**)



# Conclusions

- Fisheries is on the way of integration
- Tools and data are becoming more spatial
- Fisheries stakeholders are coming to the table
- There is still need to differentiate between area designations/zoning
- that protect the fish stocks (from fisheries pressure)
- And those that protect the fisheries from other sea uses.
- The legal basis has broadened (N2000, MSP Directive, GES)
- Interpretation and fine-tuning can be done at the sectoral management which has also to be spatial







Further reading:  
[www.panda.org/baltic](http://www.panda.org/baltic)  
[www.baltseaplan.eu](http://www.baltseaplan.eu)

Jochen Lamp , WWF Germany