



# Swedish interlinks between MPA development and MSP

**Jan Schmidtbauer Crona**

Senior Analyst,

Swedish Agency for Marine and Water Management

# MPA-regulations in Sweden the different decision levels for MPA (N2000) vs MSP

	MPA	MSP
<i>Proposals</i>	Regional	National Agency SwAM
<i>Coordination/guidance</i>	National Agency EPA (SwAM)	National Agency SwAM
<i>Decision</i>	Government	Government

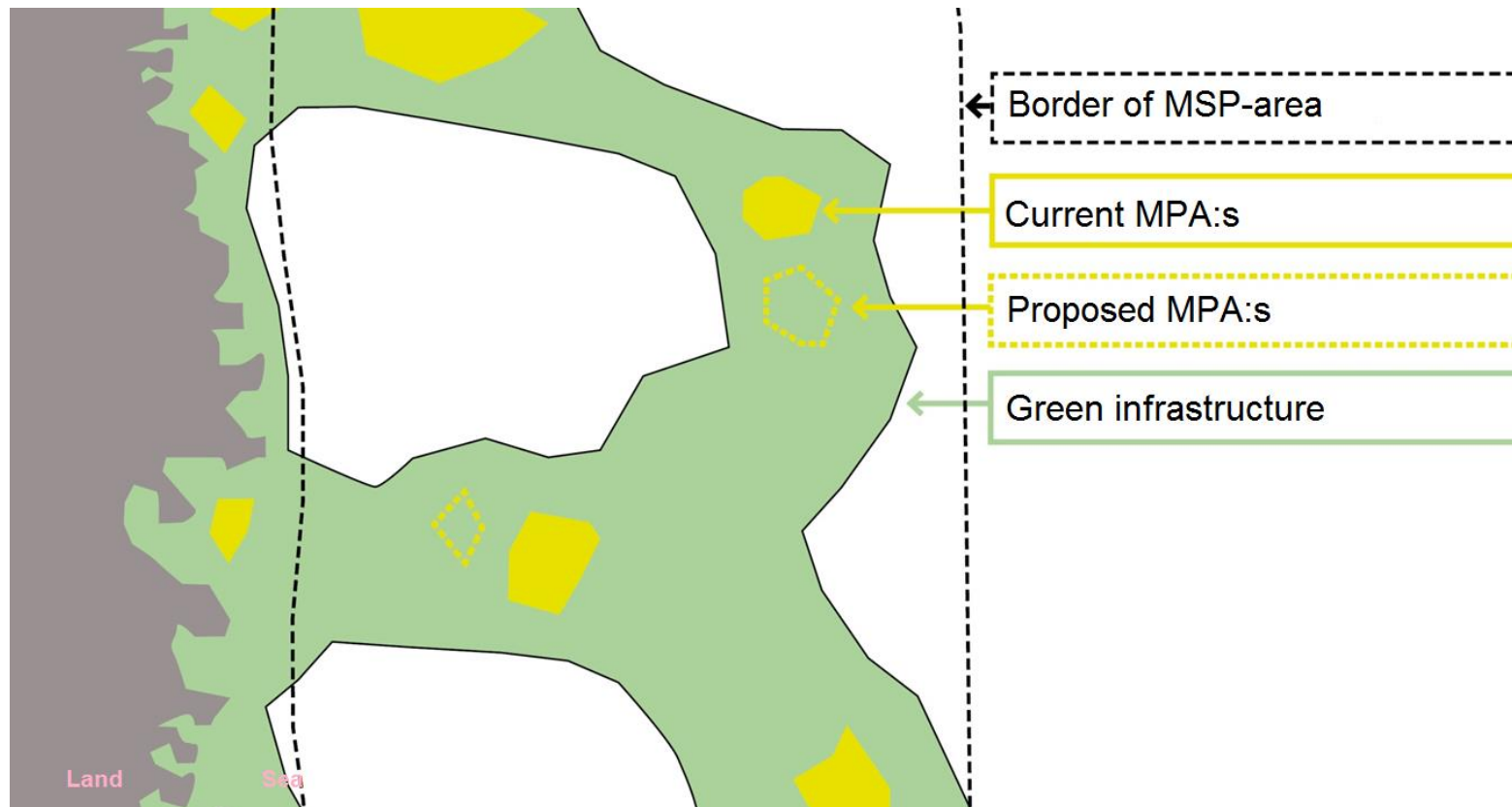
# The governmental MPA-roadmap 2016

## From 6,6% to more than 10%

### *Five focus areas:*

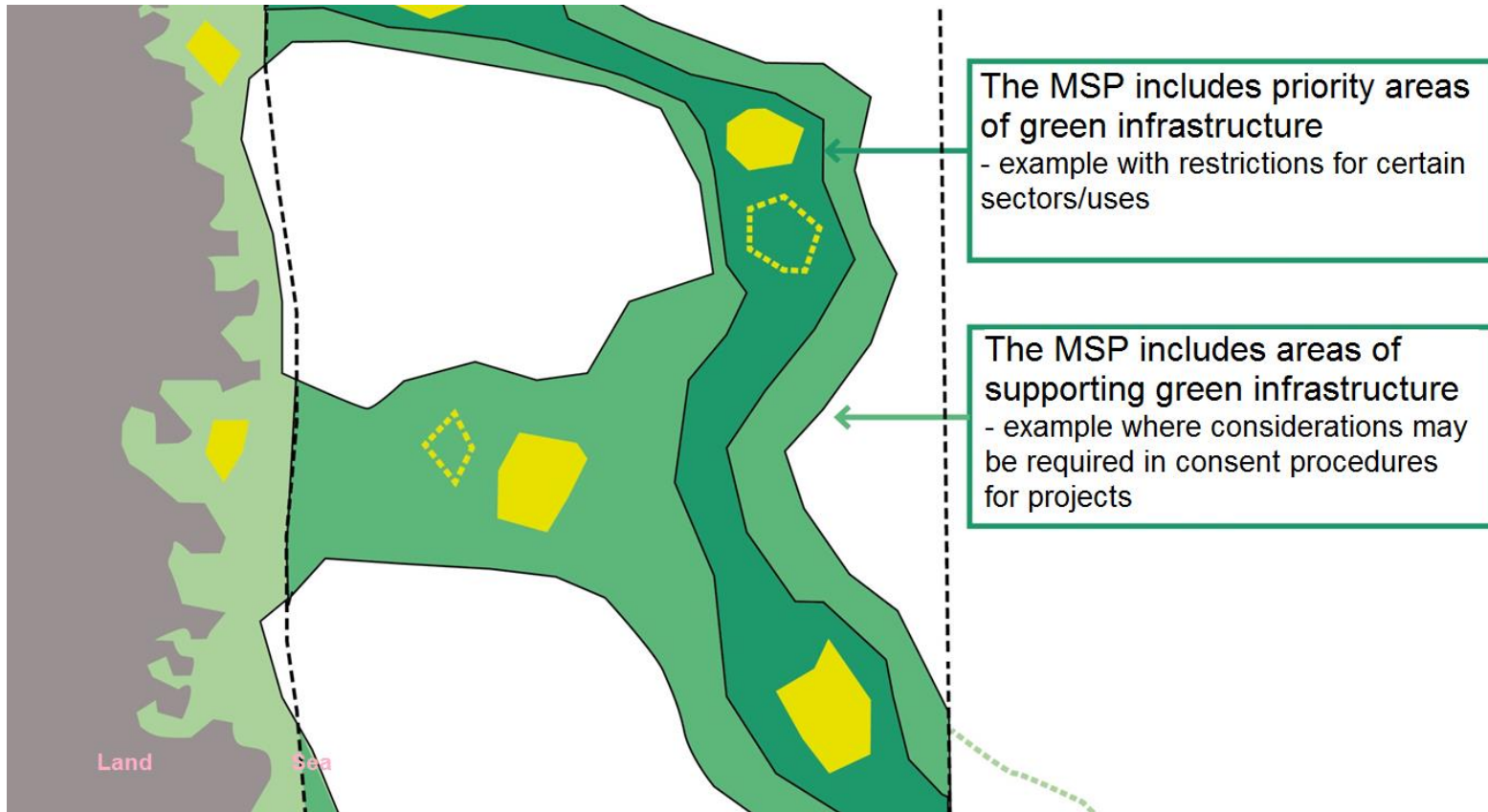
- Designate new MPA:s
  - Stronger and extended regulations in existing MPA:s
  - Establishment of a national framework with adaptive management for MPA, MPA-network and Green Infrastructure, link to MSP
  - Development of knowledge
  - Follow up
- 
- "Reference MPA" with a minimum of human pressures, one reference MPA for each MSP-area

# MPA in MSP and green infrastructure

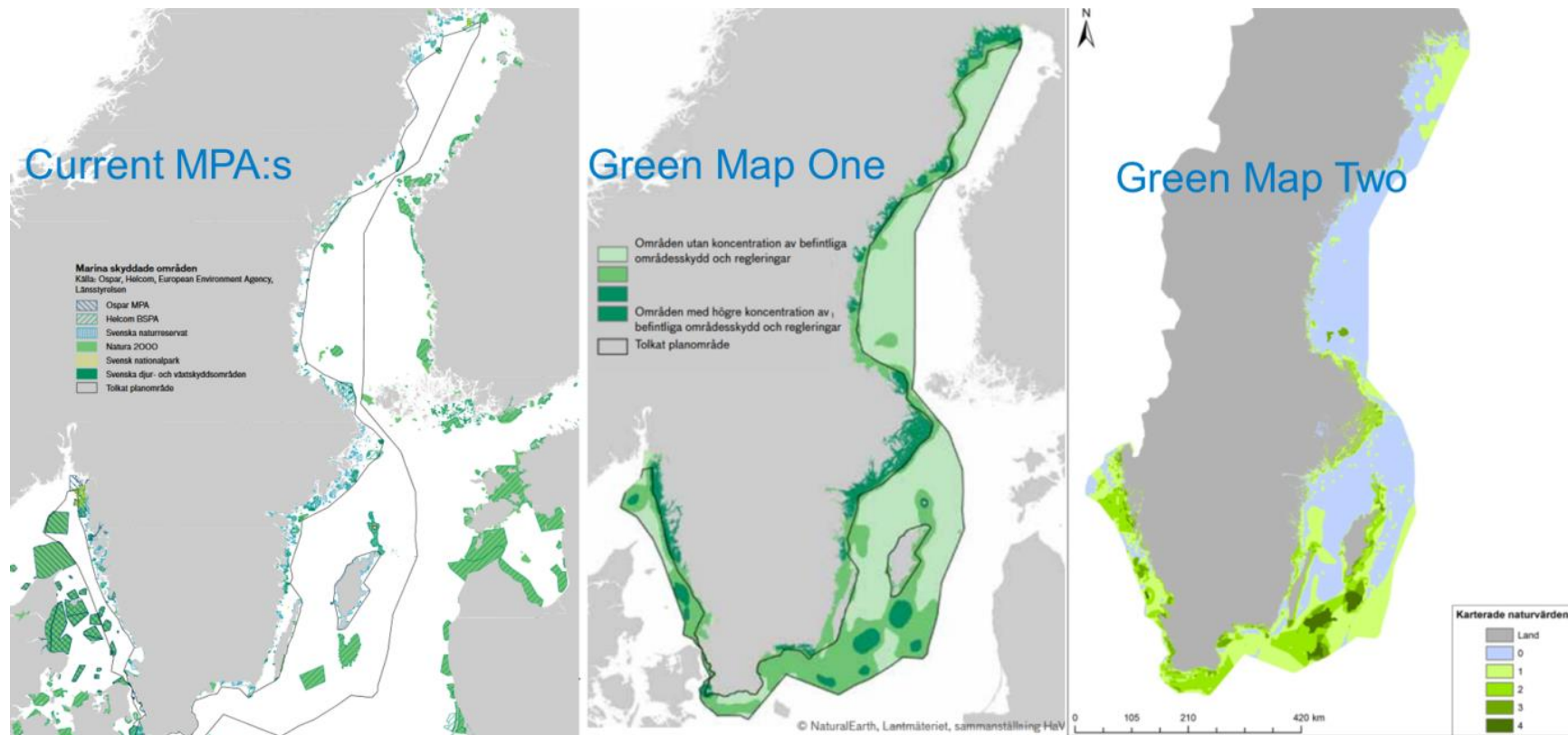


# MSP as a complement to MPA

- Critical to reach GES
- Avoiding negative impacts on priority areas
- Minimizing negative effects on supporting green infrastructure

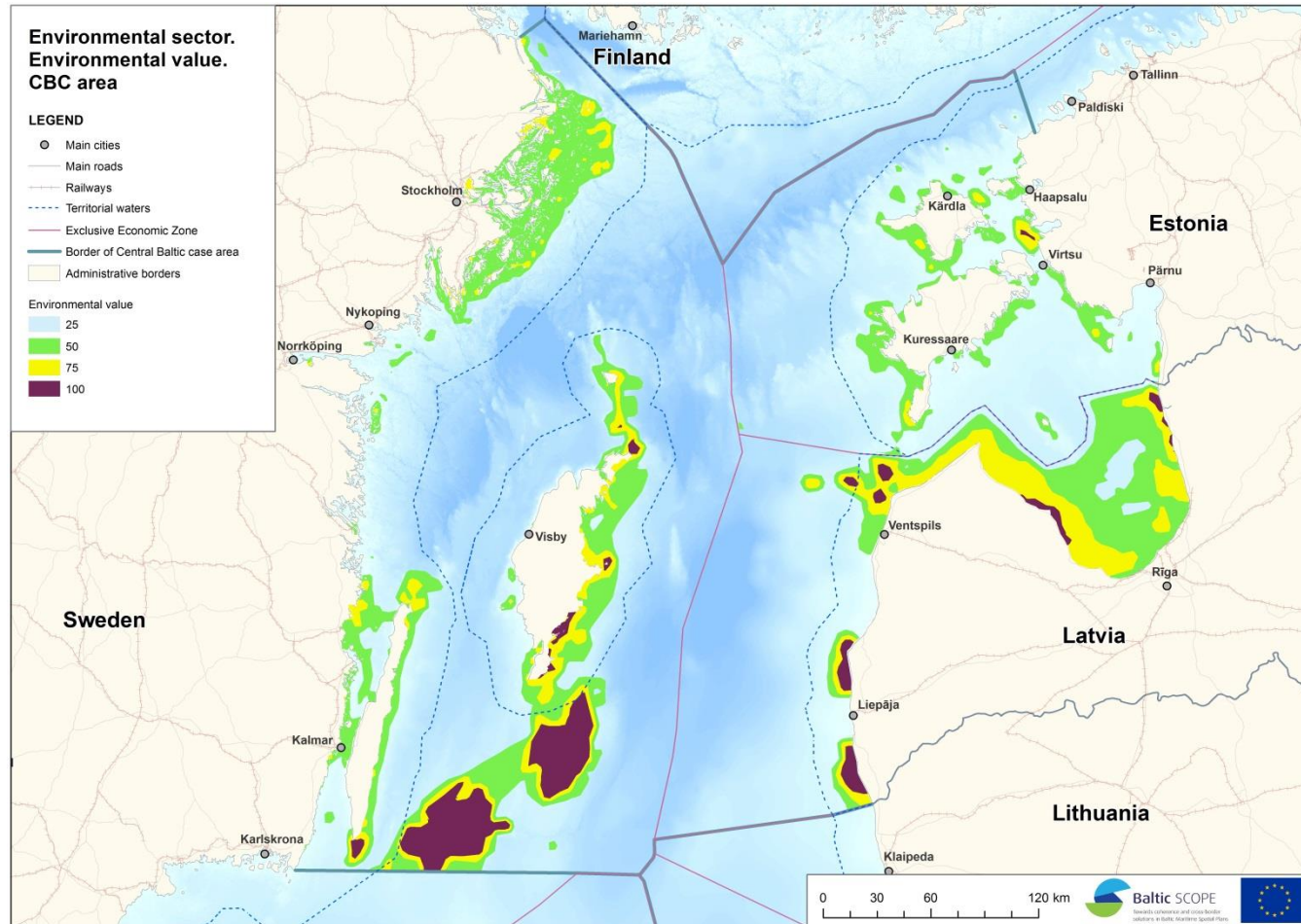


# Continuous development of knowledge





# A Baltic view is always better!



*Example from the Baltic Scope project of how marine green infrastructure could be presented in a BSR-perspective. The methods needs further development for comparable results.*

# MSP as a “replacement” of MPA (N2000)



- Harbour Porpoise example
- County of Blekinge
- Proposal for new N2000
- Conflict with national interests: Fishery, Energy, Defence, Shipping
- Stopped by the head of the County Administrative Board
- Reference in the decision to MSP: “MSP could be used to strengthen the protection of the Harbour Porpoise instead of establishing a N2000-area”

