



# Development of MPA network in Latvia – role of MSP and plans for further investigations

**Ingrīda Puriņa**

Senior researcher, Latvian Institute of Aquatic Ecology



# Development of Marine Protected Areas (MPA) in Latvia

- Important Bird Areas
- Marine territories of National Parks and Reserves





# Development of Marine Protected Areas (MPA) in Latvia



marine protected areas  
in the Eastern Baltic Sea

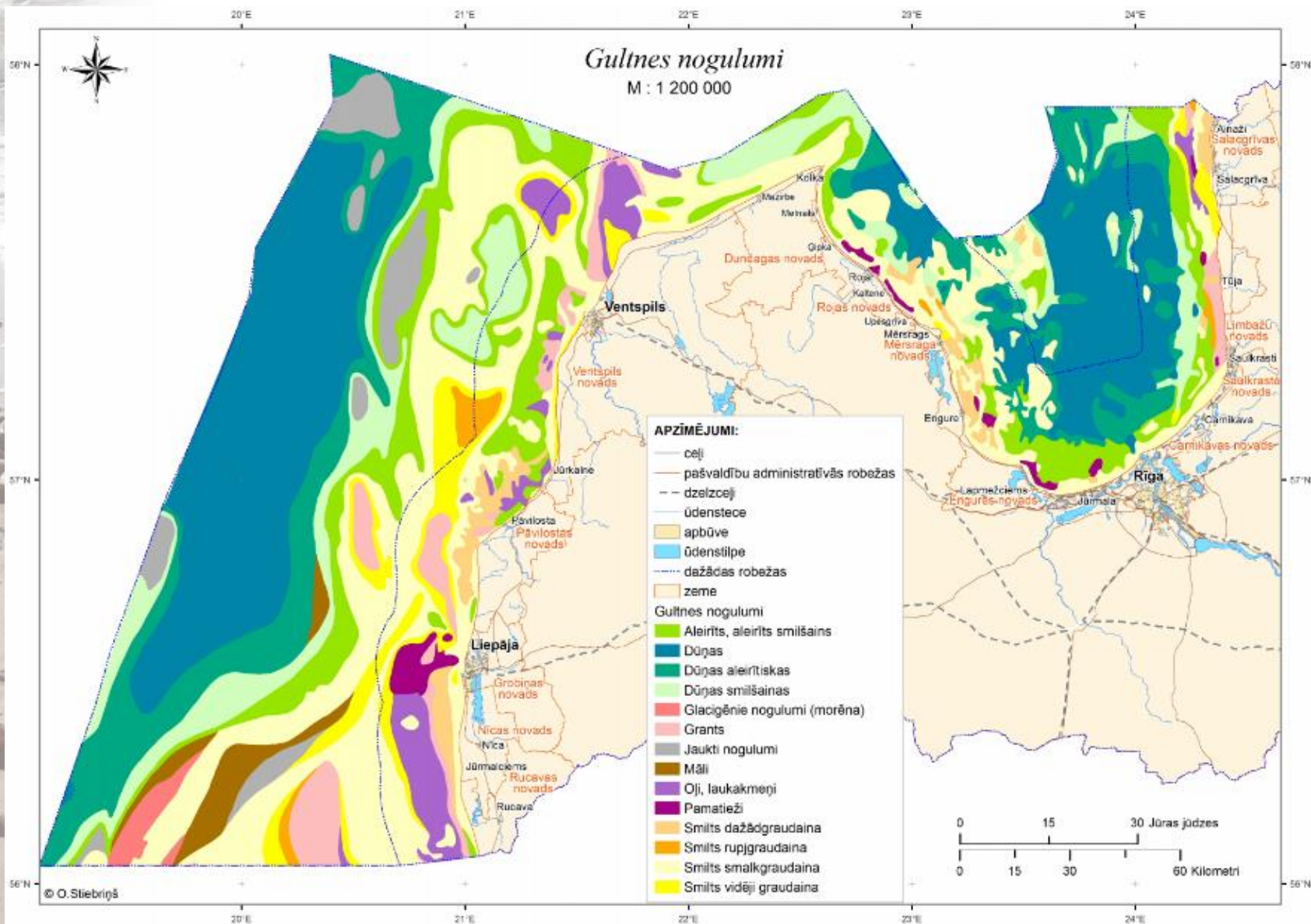
- 7 protected areas
- Established in 2010
- Natura 2000 sites
- Birds migrations, wintering, feeding and moulting areas
- Geological features
- Fish spawning grounds
- Macroalgal beds







## Sediment types





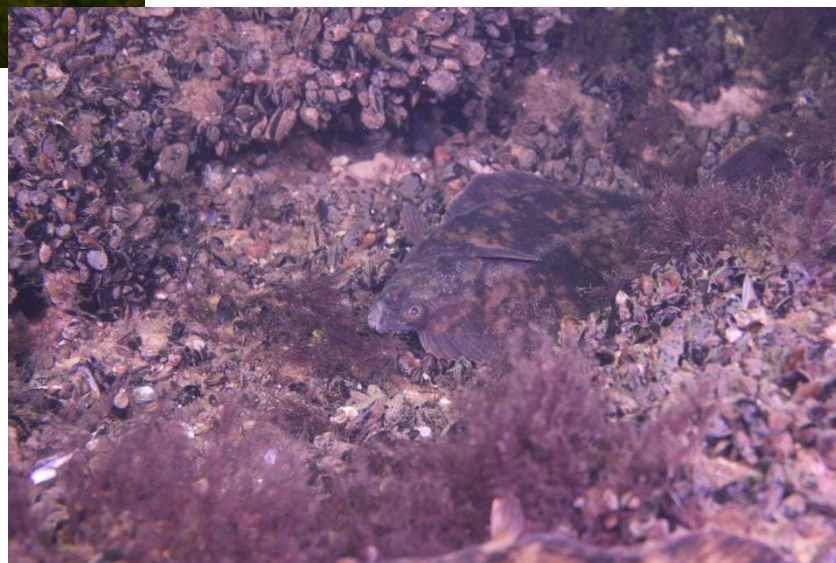
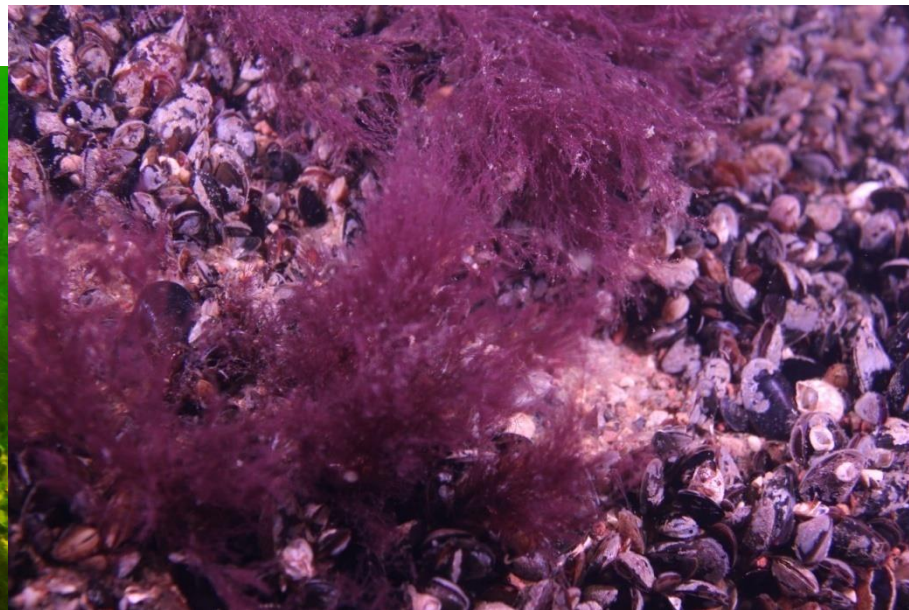
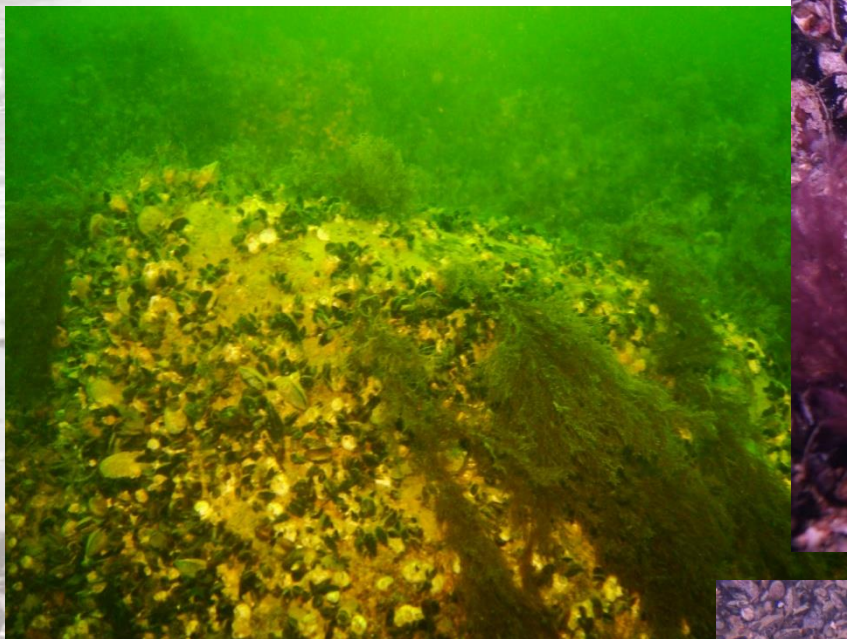
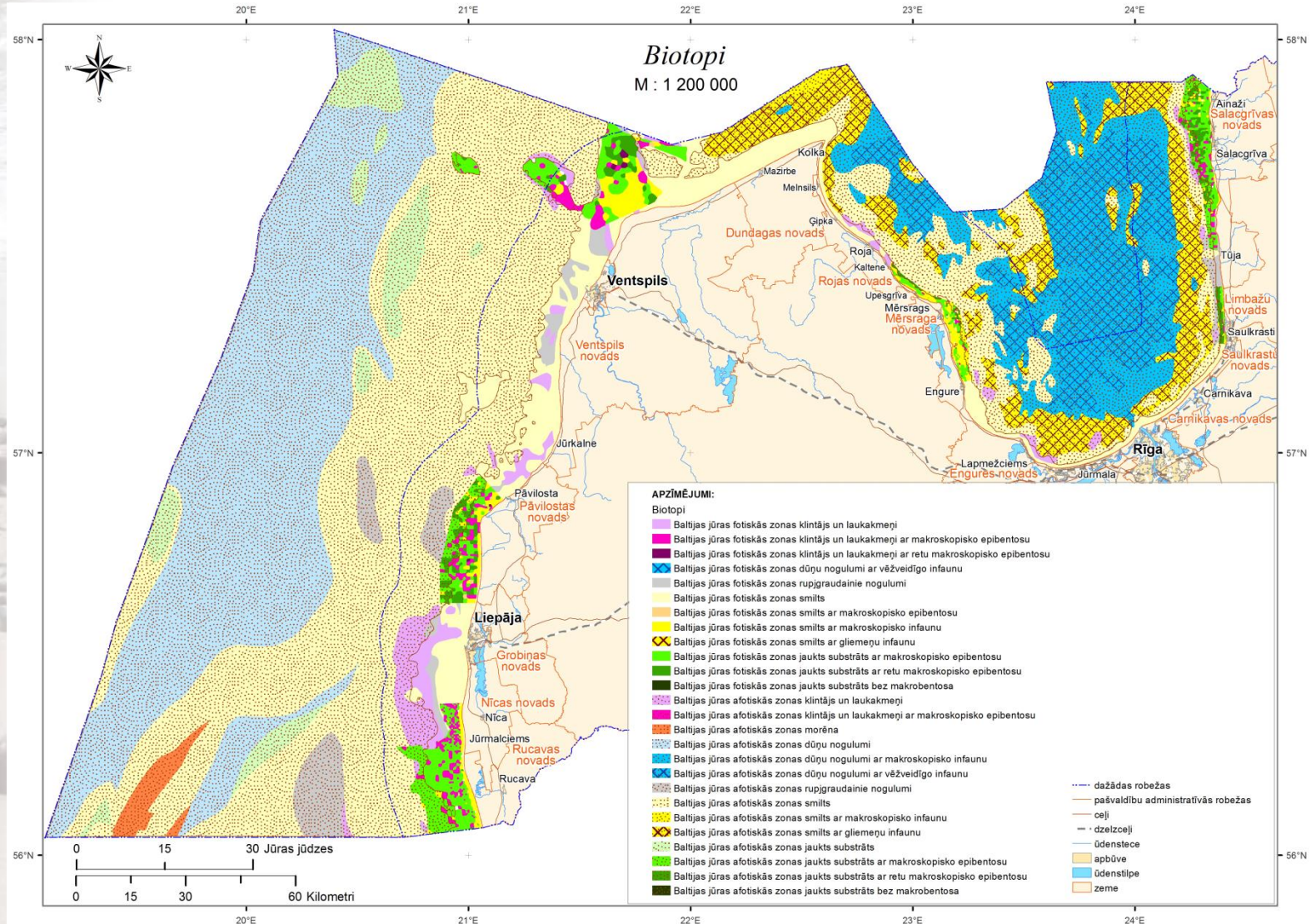


Photo- J.Aigars





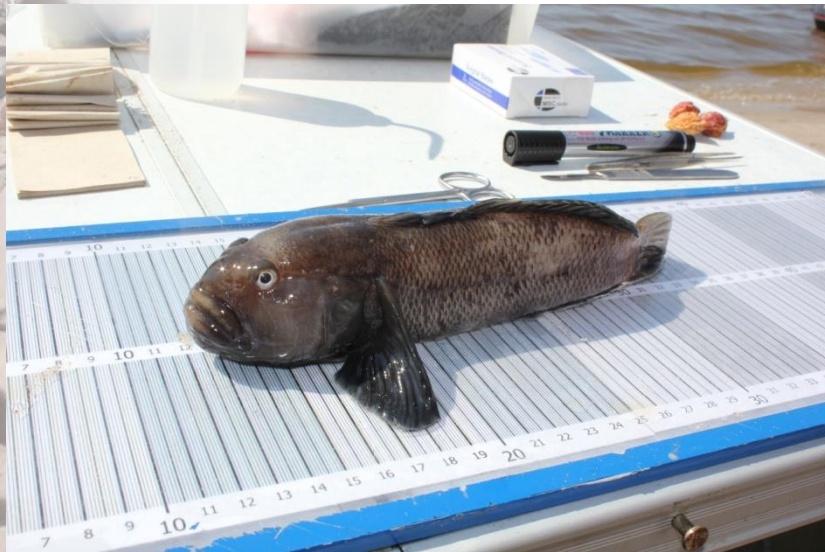
# Representativeness and connectivity of MPAs





# Threats and risks of MPAs

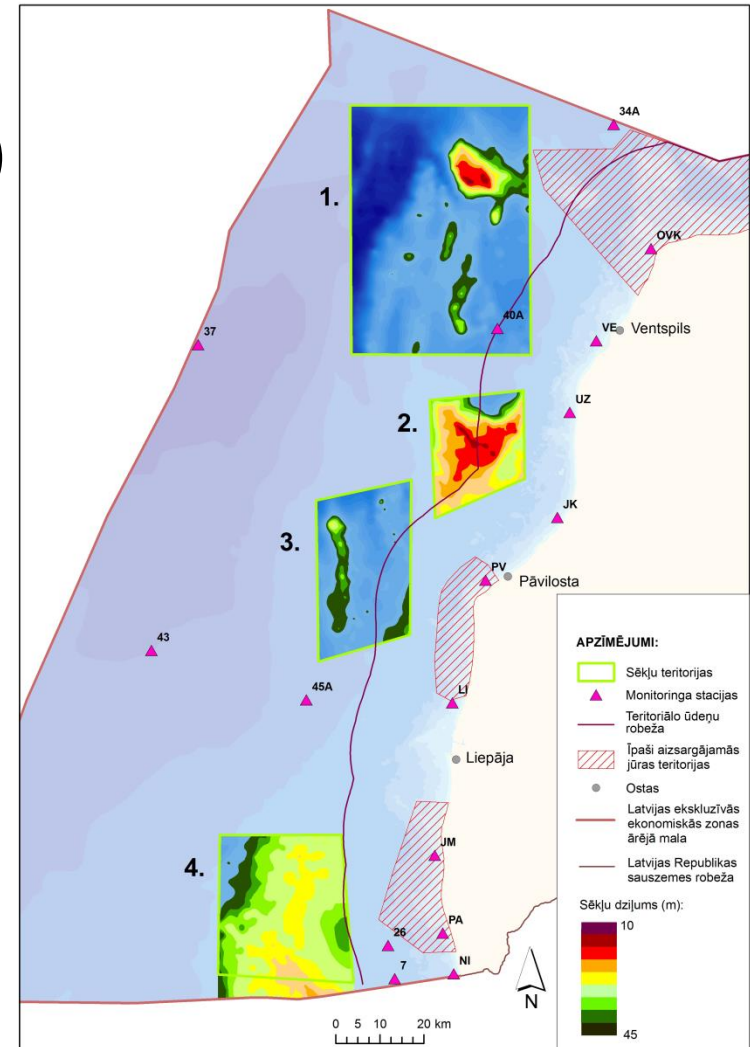
- Eutrophication- decreased light penetration
- Increased wind and wave action- increased turbidity
- Invasive species- active predation





# MSP and MPAs: identification of research areas with unknown natural value

- Elevated sandbanks (??) in the deeper areas
- Potential wind-, wave energy, oil extraction or aquaculture sites?







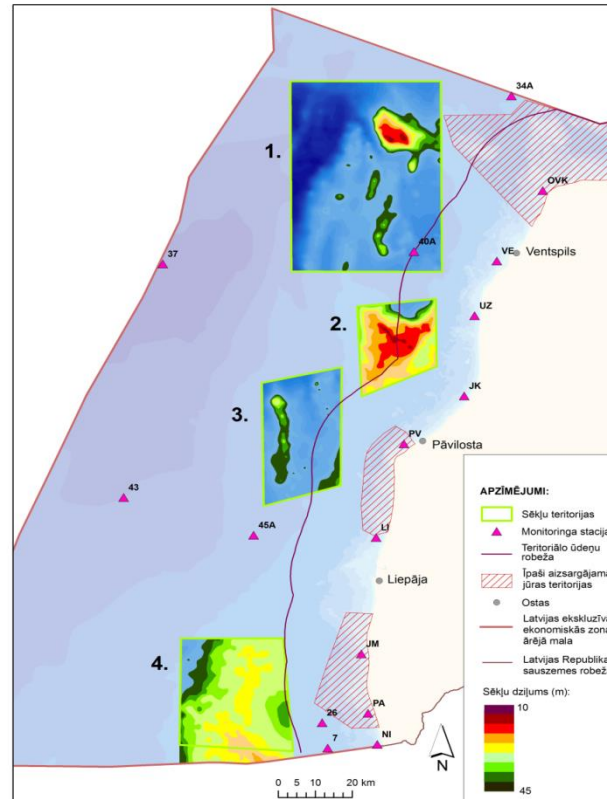
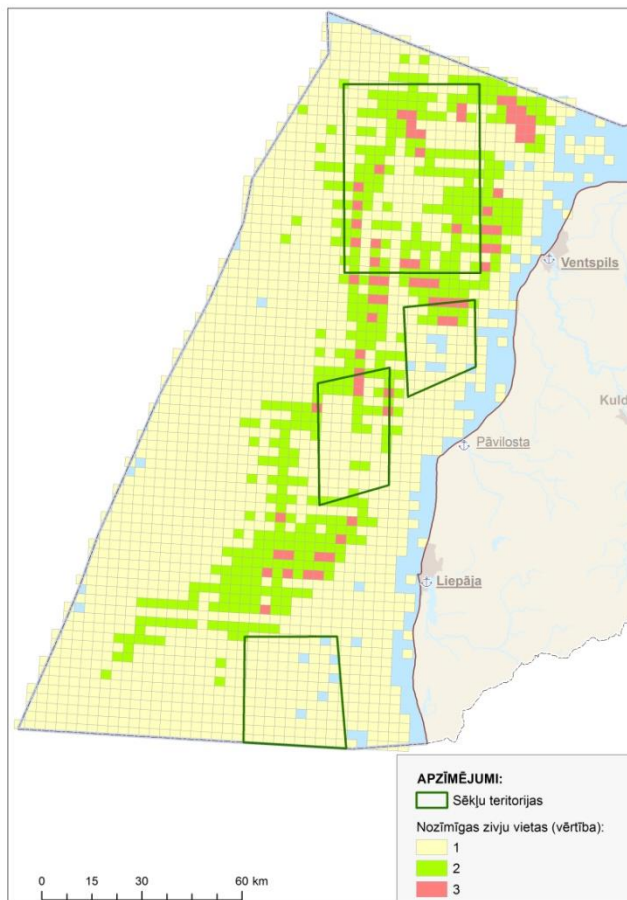
## Investigations of areas with unknown natural value

- Hard substrates
- Baltic Sea aphotic reefs with rich macrofauna
- Rich *Mytilus trossulus* stands



## Investigations of areas with unknown natural value

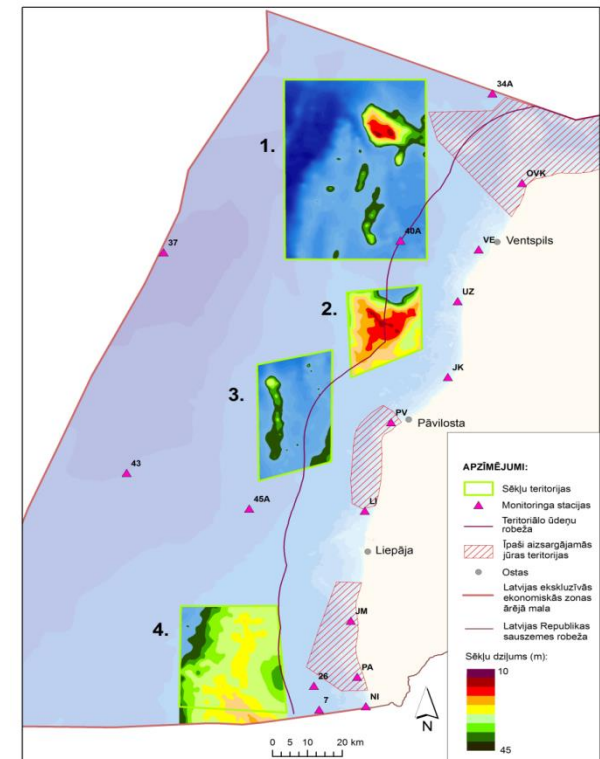
- Increased fishing activities around the reefs
- “Source” communities for coastal biotopes?





## Further development of MPAs in EEZ

- Connectivity between offshore and coastal biotopes?
- Protection status?
- Are we protecting “sink” communities and overexploiting “source” communities?
- MSP in action- can there be potential conflicts between fisheries and MPA?





Thank you for attention!

